



VOLUNTEER FIRE  
BRIGADES VICTORIA



Volunteer Fire Brigades Victoria

assisting CFA Brigades and Groups

with a timely application for VESEP funding.

## Application Help Pack - 2021

## Table of Contents

### Application Help Pack 2021

Prepared by Volunteer Fire Brigades Victoria  
to assist CFA Brigades and Groups with a timely application for VESEP funding.

1.	Table of Contents	p 2
2.	Introduction	p 3
3.	Application Details – including Tanker Costs	p 4
4.	Application Ideas	p 7
5.	VESEP Countdown Calendar	p 8
6.	Sample Business / Financial Plan	p 9
7.	VESEP Special Access Grant Applications	p 10
8.	Handy links to help with your VESEP application	p 11
9.	VESEP Application Supporting Documents	p 12
10.	Case Studies and Contact Details	p 13
11.	Attachment and Appendix Contents	p 14

---

## Introduction

---

The Volunteer Emergency Services Equipment Program (VESEP) is an ongoing annual program funded by the Victorian Government, which provides equipment grants up to a maximum of \$150,000 ex GST.

The program is in its 21<sup>st</sup> year and first started as the CESP Program (Community Safety Emergency Support Program) in 2000 and was designed in close consultation with VFBV and volunteers. The Program was intended to be a grant scheme for volunteers – designed by volunteers, with minimal administration from volunteers.

The Grant allows for \$2 in grant money for every \$1 of local contribution for sustainability and local buy-in, local driven priorities with annual strategic state initiatives, robust district/region and state volunteers peer review and a quick and timely approval and notifications process to the successful brigades and groups.

Key to its success is locally driven priority setting, endorsement by District Planning Committee's, operational support and endorsement by CFA Regional Management and a State-wide Steering Committee that reports directly to Government and the CFA Chief Officer and includes VFBV and volunteer representatives who work together to monitor the program and ensure the programs integrity and transparency.

Since its inception, the program has completed over 2,000 projects totalling more than \$140 million dollars. The program is an investment in maintaining and building volunteer capability and is designed to ease the pressures of having to fundraise for operational equipment, vehicles, specialist equipment and much needed improvements to amenities.

VFBV encourages all CFA Brigades, Groups, District Councils and Championship Committees to make use of this **VFBV Application Help Pack** to assist them in their applications.

This pack offers practical suggestions and complements CFA's Guidelines and the 2021/22 application forms. Its intent was to gather the most important information available and put it all in one place. If Brigades or Groups would like a printed copy, please call the VFBV Office on 03 9886 1141 and VFBV would be happy to post you one.

Members can also contact their local VFBV State Councillors and/or VFBV Support Officers for any additional information or assistance with their applications.

We wish you well with your application!

CFA Information and forms are located at:

<https://www.members.cfa.vic.gov.au/mycfa/Show?pageId=bovVehicleAbout>

The side links displayed at the right of the CFA's landing page will give you access to information on Specialist Appliances, Tanker Information and Equipment Information.

## Application Details 2021 – 2022

### Conditions of VESEP 2021 – 2022 Grants

- ✔ You may apply for only ONE project in the 2021 – 2022 round
- ✔ All Funding applications to be endorsed and prioritised by the respective DPC and be consistent with the District/Regional Infrastructure Plans.
- ✔ Any additions to the brigade owned fleet require approval of the local ACFO, DCO and the Chief Officer.
- ✔ CFA will maintain approved tankers and specialist appliances to level one maintenance.
- ✔ Projects commenced on or before Ministerial approval will not be eligible for VESEP funding.
- ✔ It is the responsibility of the Brigade/Group to replace assets acquired.

#### WHAT IS NOT FUNDED?

Core CFA budget requirements

Ongoing expenditure such as maintenance

Projects currently in progress

Project overspends

### Where do I find information regarding what is funded under VESEP 2021 – 2022?

Refer to CFA website - *Brigades Online > Running a Brigade > Property & Equipment > Brigade Owned Vehicles > Current VESEP Details* and click to download:

- VESEP CFA Program Guidelines for 2021/22 funding round. See page 3 for priority categories
- VESEP CFA Application Form **Part A: Vehicles and Operational Equipment Application**
- VESEP CFA Application Form **Part B: Volunteer Amenities and Minor Works Application**
- VESEP Approved Vehicle Specification and Costs

Alternatively, documents can be found on VFBV website by following VESEP article on web home page.

### Endorsed Projects: must be operationally justified

If a brigade is purchasing an **additional vehicle to the fleet** the application will need to be endorsed by your local ACFO and DCO.

**The Chief Officer will have the final approval over all additions to the fleet**

#### VESEP Ultra Light Tanker (ULT)

##### Toyota Landcruiser

\$2 VESEP to \$1 brigade contribution  
cab chassis body funded by grant

Brigade Contribution	\$ 22,500
Grant Contribution	\$125,000
<b>TOTAL project cost</b>	<b>\$147,500</b>



#### VESEP Light Tanker Crew Cab

\$2 VESEP to \$1 brigade contribution  
cab chassis body funded by grant

Brigade Contribution	\$ 30,000
Grant Contribution	\$195,000
<b>TOTAL project cost</b>	<b>\$222,500</b>





**Application Details 2021 – 2022**

If a brigade is purchasing an additional vehicle to the fleet the application will need to be endorsed by your local ACFO and DCO.

**The Chief Officer will have the final approval over all additions to the fleet.**

**VESEP Medium Tanker**  
**Addition to the fleet**  
\$2 VESEP to \$1 brigade contribution for the total vehicle cost.

Brigade Contribution	\$126,667
Grant Contribution	\$253,333
<b>TOTAL project cost</b>	<b>\$380,000</b>



**VESEP Medium Tanker**  
**Replacement**  
\$2 VESEP to \$1 brigade contribution towards cab chassis cost.

Brigade Contribution	\$ 58,333
Grant Contribution	\$321,667
<b>TOTAL project cost</b>	<b>\$380,000</b>



**VESEP Rehabilitation Unit**  
**Isuzu NNR 45-150**  
\$2 VESEP to \$1 brigade contribution

- Brigade Contribution \$ 40,000
- Grant Contribution \$ 80,000
- **TOTAL project cost \$120,000**



The appliance is a **Multi-Purpose Vehicle**. The rear of the appliance can be configured to suit a brigades specific needs.

**Examples;**  
Remote Area Lighting.  
Staging Area Equipment.  
Training Equipment.  
Thermal Imaging Equipment.

**VESEP Multi-Purpose Vehicles**

**V1 – 4 x 4 short body Manual**

- Brigade Contribution \$ 77,500
- Grant Contribution \$150,000
- **TOTAL project cost \$227,500**


**V2 – 4 x 2 Short Body Manual**

- Brigade Contribution \$ 75,000
- Grant Contribution \$150,000
- **TOTAL project cost \$225,000**

**V3 – 4 x 2 Long Body Auto**

- Brigade Contribution \$ 74,167
- Grant Contribution \$148,333
- **TOTAL project cost \$222,500**

**Indicative Costs as at April 2021 (excludes GST)**  
Cost escalation to point of build in 2021/22 up to 10% increase



## Application Details 2021 – 2022

### Field Command Vehicles (standard build)

\$2 VESEP to \$1 brigade contribution  
To maximum VESEP contribution of \$150,000

Indicative Cost (exGST)

- Brigade Contribution \$26,667
- Grant Contribution \$53,333
- **TOTAL project cost \$80,000**

**NB. FCV Vehicles under 5 years old will not be considered for replacement under the program.**



### Volunteer Amenities Improvements

\$2 VESEP to \$1 brigade contribution  
To maximum VESEP contribution of \$5,000

**Kitchen Refurbishments, Fridge, Air conditioner, Hot Water Services, Carpet, Furniture, Tables & Chairs**

- Brigade Contribution \$1,667
- Grant Contribution \$3,333
- **TOTAL project cost \$5,000**

Needs to be non-structural, not requiring a permit.

### Brigade Minor Works

\$2 VESEP to \$1 brigade contribution  
Total Project value to be less than \$100,000

**Enhance CFA Member amenities and safety. Motorization of Motor Room Doors, Installation of garage/Shed, Station refurbishment, PPC Storage.**

- Brigade Contribution \$33,333
- Grant Contribution \$66,667
- **TOTAL project cost \$100,000**

A position *VESEP Minor Works Project Manager – Land & Buildings* has been established to advise brigades considering minor works projects and to coordinate all Planning and Building Permit approval.

Register with Georgia Fine [g.fine@cfa.vic.gov.au](mailto:g.fine@cfa.vic.gov.au)

## Tanker Costs – VESEP 2021/22



Pricing - Indicative @ April 2021

Funding Source	ULT Landcruiser	Light Tanker Crew Cab	Medium Tanker Addition to Fleet	Medium Tanker Replacement Tanker
Brigade	\$ 22,500	\$ 30,000	\$ 126,667	\$ 58,333
Grant Contribution	\$125,000	\$ 195,000	\$ 253,333	\$ 321,667
<b>Total</b>	<b>\$147,500</b>	<b>\$ 222,500</b>	<b>\$ 380,000</b>	<b>\$ 380,000</b>

Cost escalation to point of build in 2021/22 allow up to 10% increase.  
Options available on some appliances at Brigade cost

## Application Ideas from Previous Successful Grants

If you need inspiration the list below may assist you in determining what would most help your Brigade, Group, District Council or Championship Committee.



**With VESEP grants, the key to success is preparing your application and gaining support early.**

**volunteer  
emergency  
services  
equipment  
program** 2021

**You have 8 weeks from grant announcement to due date  
18 June, 2021**

- Trailer & Generator
- Data Projector
- FCV
- Kitchen Upgrade
- Ultra Light Tanker
- Extension to Motor Room
- Thermal Imaging Camera
- Lighting Equipment
- Motorized Security Gates
- Turnout Room
- Car fridge
- Station Extension
- Remote Area Lighting
- Carpark Asphaltting
- Alarm System
- Hot Water Service Installation
- Chairs & Trestle Tables
- Air Conditioner and Insulation Bats
- Mobile Hose Testing Trailer
- Lawnmower
- Pressure Washer
- Meeting room Upgrade
- Automated External Defibrillator
- Water Tank and Pump
- Notebook & Tripod
- 2.4c Medium Tanker
- Chainsaw Chaps
- Concrete Apron
- Protek Nozzle Branches
- TV/DVD and Noticeboard
- Upgrade Comms Room and Office
- Turnout Gear Racks
- Rehabilitation Unit
- Water Filter
- Meeting Room Furniture
- Big Fill
- External Station Lighting
- Roller Door Automation
- Data Projector
- Rescue Tools
- Laptop Software Printer
- Ultra Light Tanker
- Workshop Storage



### Countdown Calendar – Tick your way to success!

23 April 2021	<input type="checkbox"/>	<ul style="list-style-type: none"> <li>Government announces 2020/21 VESEP program with the details of this current year's priorities and categories in which funding will be made available.</li> </ul>
23 April 2021	<input type="checkbox"/>	<ul style="list-style-type: none"> <li>CFA applications open</li> </ul>
Are you well under way?	<input type="checkbox"/>	<ul style="list-style-type: none"> <li>Brigade/Group updates/prepares your <b>financial plan</b> or considers a <b>Special Access Grant</b> <ul style="list-style-type: none"> <li>current bank account/s balance/s</li> <li>5-year-plan for brigade expenditure – what are those funds planned outcome?</li> <li>5-year-plan for boosting brigade funds</li> </ul> </li> </ul>
	<input type="checkbox"/>	<ul style="list-style-type: none"> <li>Brigade/Group discusses possible category it wishes to apply for</li> <li>Brigade/Group decides on the item it deems will significantly improve your operational readiness or member facilities.</li> <li>Brigade/Group obtains preliminary quotes</li> <li>Required endorsement from District AFCO and DCO if applying for additions to fleet obtained</li> </ul>
<b>COMMUNICATE YOUR PLANS</b>		
April, May and June 2021	<input type="checkbox"/>	<ul style="list-style-type: none"> <li>Brigade/Group continues discussion of plans with your Group and Catchment Officers</li> <li>Contacts the VESEP Minor Works Project Manager if applying for this category</li> <li>Seeks expert advice from the CFA Regional Asset Maintenance Manager</li> <li>Continues the discussion of the idea with your neighbouring Brigades</li> <li>Ensures that Brigades/Group application supports the Group Resource plan</li> </ul>
	<input type="checkbox"/>	<ul style="list-style-type: none"> <li>Brigade/Group discusses plans with Catchment Officers/ Commanders</li> <li>Brigades/Group seeks endorsement by Catchment Officer/ Commanders that your application supports the District Resource Plan</li> </ul>
	<input type="checkbox"/>	<ul style="list-style-type: none"> <li>Brigade/Group discuss plans with CFA Project Coordinator, Diane Frost, to ensure you are on the right track and to raise your profile ensuring than Diane is aware of your application. Diane's contact details are 9262 8630 or <a href="mailto:d.frost@cfa.vic.gov.au">d.frost@cfa.vic.gov.au</a></li> </ul>
	<input type="checkbox"/>	<ul style="list-style-type: none"> <li>Brigade/Group prepares supporting documents describing:           <ul style="list-style-type: none"> <li>purpose and how it will assist with your operational readiness</li> <li>how it will assist your brigade/group amenities in support of your infrastructure needs</li> <li>how it will assist your neighbouring Brigades and stating their level of support</li> <li>how it will assist your local and wider community.</li> </ul> </li> </ul>
	<input type="checkbox"/>	<ul style="list-style-type: none"> <li>Brigade/Group completes draft copy of CFA Application Forms A/B/Special Access</li> <li>Completes <i>Addition to the Fire Fighting Appliance Fleet Operational Justification</i> if required</li> </ul>
<b>FINE TUNE YOUR APPLICATION</b>		
by 18 June 2021	<input type="checkbox"/>	<ul style="list-style-type: none"> <li>Brigade/Group confirms quotes</li> </ul>
	<input type="checkbox"/>	<ul style="list-style-type: none"> <li>Brigade/Group discusses/confirms modifications with Group/Catchment Officer and District ACFO so all are aware of what is coming</li> </ul>
	<input type="checkbox"/>	<ul style="list-style-type: none"> <li>Closing date for applications to be forwarded to District ACFO</li> <li>Brigade/Group submits application by <b>18 June 2021</b></li> </ul>
<b>PROCESSING VESEP APPLICATIONS</b>		
July, August and September 2021		<p>DPCs meet to prioritise District's applications - <i>that's why you talked about it with Group!</i></p> <ul style="list-style-type: none"> <li>Regional Deputy Chief Officers provide comments and send to CFA Project Coordinator</li> <li>CFA VESEP Steering Committee members approve projects. Decisions endorsed by Chief Officer</li> <li>EMV forwards agencies' recommendations to Minister for Emergency Services</li> </ul>
End-September 2021		<ul style="list-style-type: none"> <li><b>Anticipated</b> Ministerial announcement after notifying local Members of Parliament.</li> <li>Successful Brigades receive written funding offer. Unsuccessful brigades advised.</li> </ul>

## Sample Business Plan

Providing a simple A4 document allows transparency and indicates how the brigade funds are managed and targeted towards new projects. It protects funds raised to replace brigade items.

**NB: Each CFA District may have their own local pro-forma. Please check with your Regional Finance & Administration Manager to ask for a copy of their Business Plan.**

### SAMPLE BASIC BUSINESS / FINANCIAL PLAN

<b>Brigade/Group Name:</b>		<b>Brigade No:</b>	<b>Date:</b>
<b>District:</b>		<b>Region:</b>	
<b>Bank account name &amp; number</b>			
<b>Account balance</b>	<i>as per current date:</i>	\$	
	<i>as per 30/06/2020:</i>	\$	
	<i>difference</i>		\$
<b>Last three year's financial summary</b>			
	Receipts	Expenses	Profit or Loss
2019 – 2020	\$	\$	\$
2018 – 2019	\$	\$	\$
2017 – 2018	\$	\$	\$
<b>How are you planning to use the funds?</b>			
<i>e.g. chainsaw, wet weather gear, toilet, new engine bay, FCV, kitchen</i>			
<b>Anticipated cost of project/s</b>			
1.		\$	
2.		\$	
3.		\$	
<b>Fundraising methods planned</b>			
<i>e.g. seek targeted donations from community; wood raffles x 3, VESEP grant; operate parking for local market; provide BBQ lunches &amp; morning teas for local market/rodeo; hold a rock 'n roll dance.</i>			
<b>Signed</b>			
<b>Captain</b>	<i>Name</i>	<i>Signature</i>	<i>Date</i>
<b>Secretary</b>	<i>Name</i>	<i>Signature</i>	<i>Date</i>

## Special Access Grant Application Guidelines

Not enough money to contribute to a VESEP application but your Brigade or Group really needs the VESEP funding to contribute towards the total cost of a critical item of equipment or station improvement?

Need **financial assistance** with a VESEP application?

### NO WORRIES!

Recognising that many Brigades and Groups are unable to raise the necessary contribution for a VESEP project, the CFA VESEP Steering Committee has come to your assistance. They have made allowance for a **Special Access Grant**.

*In other words, Brigades or Groups not flushed with funds can nominate how much they can contribute, if anything at all, towards the project, and request a special access grant to help with the remainder of the Brigade or Group contribution.*

### HOW DOES IT WORK?

You can receive financial assistance towards your project item if you meet the **Special Access Criteria** detailed on the Special Access Grant Application form:

- Talk to your District Catchment Officer / Assistant Chief Fire Officer about your situation and your plans to seek their justification of your special access application.
- Describe and document why you are unable to make the full brigade contribution.
- List any purchases over \$1,000 you made over the last three years.
- Detail what fundraising activities you have been involved in over the last three years.
- Provide a copy of Brigade or Group Audit Financial Reports over the last three years.
- Obtain the endorsement of your Assistant Chief Fire Officer and Regional Deputy Chief Officer.

Contact your District Catchment Officer/Assistant Chief Fire Officer if you want to progress a **VESEP Special Access Application**

*CFA provided a copy with the VESEP mail-out to your Brigade / Group  
All application forms are available for download from the VFBV website*



## Handy links to help with your application

**Log onto BRIGADES ONLINE then start here...**

<https://www.members.cfa.vic.gov.au/mycfa/Show?pagelId=bovVehicleAbout>

**CFA: Brigades Online / Running a Brigade / Property and Equipment/ Brigade Owned Vehicles / Current VESEP Details**

*...then, to obtain appropriate document with details of item you are seeking,  
from the panel on the left select:*

### EQUIPMENT INFORMATION

Search this webpage  
if you are looking for:

#### Amenities and Minor Works

- VESEP Minor Works
- VESEP Volunteer Amenities
- VESEP Generator

#### Fire & Incident Management

- VESEP FCV Common Vehicle Weight Table
- VESEP GVM Weight Proforma
- VESEP FCV Brigade Built Version
- VESEP FCV Standard Build

#### Firefighting Equipment

- VESEP Big Fill Trailer Single
- VESEP Big Fill Trailer Tandem
- VESEP General Purpose Trailer
- VESEP PPC Chainsaw Operations
- VESEP Remote Area Lighting
- VESEP Thermal Imaging Camera
- VESEP Vegetation Management Side x Side Vehicle

### TANKER INFORMATION

Search this webpage  
if you are looking for:

#### Light Tanker

- VESEP Light Tanker Crew Cab
- VESEP Light Tanker Crew Cab Detailed Specifications.

#### Medium Tanker

- VESEP Medium Tanker
- VESEP Medium Tanker Specification

#### Tanker

- VESEP 2020/21 Tanker Costs

#### Ultra Light Tanker

- VESEP Ultra Light Tanker (*Landcruiser*)
- VESEP Ultra Light Tanker Detailed Specification

### SPECIALIST APPLIANCES

Search this webpage  
if you are looking for:

#### Big Fill

- VESEP Big Fill Specification
- VESEP Big Fill

#### Multi-Purpose Vehicles

- VESEP Multi-Purpose Vehicle

#### Rehabilitation Vehicles

- VESEP Rehabilitation Unit

<https://www.members.cfa.vic.gov.au/mycfa/Show?pagelId=bovVehicleAbout>

## VESEP Application Supporting Documents

- 1. Brigade letter on Brigade letterhead to accompany your application** to District Headquarters regarding your application for your project item.

*Sample contents of letter:*

With our application is the supporting documentation required.

In addition we submit a few other details:

- Financial situation, statement, business plan, *Special Access grant* application.
- Support from neighbouring Brigades and Groups.
- Support from Catchment Officer

Yours Sincerely

- 2. Completed VESEP 2021/22 Application form A and B** (2 page available in Word format) and if necessary, completed *Addition to the Fire Fighting Appliance Fleet Operational Justification* form.
- 3. Quotation** – copy of quote from supplier indicating all inclusions, but excluding GST
- 4. Copy** of most recent Bank Statements
- 5. Copy of Brigade Financial Plan** indicating where the brigade monies are being directed and if necessary, include your *Special Access grant* application.
- 6. Supporting Documents you provide re your Brigade/Group.**

*Provide a few details/or a statement for each point*

- Name of Brigade/Group and item sought.
- A few details about the Brigade
  - Group
  - Municipal Council
  - Vegetation types
  - Fire risks
  - Traffic – if congestion is an issue
  - Victorian Risk Register rating – if applicable
- How the equipment, vehicle, or project would be helpful in light of all this information.

**Brigade Information** – provide a few details for each point

- How will your brigade consistently crew and operate vehicles and/or equipment?
- Will the vehicle be housed in the fire station?
- Does the vehicle meet the Regional Strategic Resourcing Plan?
- Brigade Turnouts per year?
- Time distance from neighbouring Brigade

**Selection Criteria** – provide a few details for each point (*see CFA guidelines p3-4*)

- Needs assessment
- Risk assessment
- Ability to crew and operate – further details.
- Benefit to community/catchment.
- Does the item fall within Brigade/Group core responsibilities?
- How the project will enhance your operational readiness and service delivery

## Case Studies

The Case Studies are provided by volunteer members to provide inspiration and support

- in each of the five VESEP Categories
- by providing recommended tips and handy hints.
- what the Brigade or Group thought made their application successful

The Case Studies can be found on the [VFBV website \(https://tinyurl.com/vesep-casestudy\)](https://tinyurl.com/vesep-casestudy)

## VFBV VESEP Support Contact Details

**VFBV Application Help Pack** Download at [www.vfbv.com.au/vesep.php](http://www.vfbv.com.au/vesep.php)  
A paper copy is available on request. Call VFBV Office 03 9886 1141

**Email Support** [vesep@vfbv.com.au](mailto:vesep@vfbv.com.au)

**VFBV Support Officer Support**

North East Region	Michelle Ryan	0409 109 447
North West Region	Glenn Mercer	0409 119 477
South East Region	Colin Booth	0456 554 593
South West Region	Peter Sharman	0428 751 652
West Region	Chris Dent	0407 334 685

## CFA VESEP Support Contact Details

<b>Brigades Online</b>	Running a Brigade/Property & Equipment/Brigade Owned Vehicles/Current VESEP Details <a href="https://www.members.cfa.vic.gov.au/mycfa/Show?pageId=bovVehicleAbout">https://www.members.cfa.vic.gov.au/mycfa/Show?pageId=bovVehicleAbout</a>
<b>Phone / Email Support</b>	<p><b>Diane Frost</b> Ph: 03 9262 8630 CFA VESEP Coordinator <a href="mailto:d.frost@cfa.vic.gov.au">d.frost@cfa.vic.gov.au</a></p> <p><b>Georgia Fine</b> Exec. Manager Land &amp; Buildings <a href="mailto:g.fine@cfa.vic.gov.au">g.fine@cfa.vic.gov.au</a> VESEP Minor Works Project Manager</p>
<b>Assistant Chief Fire Officer (ACFO)</b>	Contact your District Office

---

## Attachment & Appendix Contents

---

In addition to this Application Help Pack, VFBV have put together some additional downloads available from [www.vfbv.com.au/vesep.php](http://www.vfbv.com.au/vesep.php)

### Attachment 1

Special Access Grant Application Forms

### Attachment 2

2021-2022 CFA Program Guidelines

### Attachment 3

CFA Application Forms

### Appendix

CFA Information Sheets

---

## Attachment 1

---

### Special Access Grant

Forms are also available to download from the CFA website

<https://www.members.cfa.vic.gov.au/mycfa/Show?pageId=bovVehicleAbout>

1.	Brigade Special Access Grant Application Form	p 2
2.	DPC Special Access Grant Application Form	p 4



# VESEP Special Access Grant - Volunteer Emergency Services Equipment Program 2021/22

Brigade/Group Name \_\_\_\_\_ Brigade/Group No: \_\_\_\_\_  
 District: \_\_\_\_\_ Region: \_\_\_\_\_  
 Proposed Project \_\_\_\_\_ Date:                    /    /

**This form is to be completed with operational staff in the District**

**Project Costs:**

Brigade Contribution (if any)	\$
Extended Credit Application (if applicable)	\$
Special Access Grant	\$
VESEP Funds:	\$
Total Project Cost:	\$

Brigade Contribution + Extended  
Credit Application (if applicable)  
= Brigade Contribution

Special Access Grant + VESEP  
Grant  
= VESEP Contribution

**Reasons for Special Access Grants**

1. District's justification for special assistance including explanation of brigades inability to fund brigade contribution

---

---

---

---

2. Details of any purchases over \$1,000 the last three years

---

---

---

3. Details of fund raising initiatives undertaken over the last three years

---

---

---

4. Copies of brigade Audit Financial Reports over the last three years attached  Yes

**Recommendation and Endorsement**

**Assistant Chief Fire Officer**

Name: ..... Signature ..... Date:    /    /

**Deputy Chief Officer Endorsement**

Name: ..... Signature ..... Date:    /    /





## **VESEP Special Access Grant - Volunteer Emergency Services Equipment Program 2021/22**

### **Special Access Grant Criteria:**

The CFA VESEP Statewide Steering Committee is aware that for reason of remoteness and small communities many Brigades are unable to raise the necessary contribution for a VESEP project. For this reason, the Committee welcomes applications to assist brigades in acquiring replacement or new equipment, upgrading brigade amenities or to undertake minor upgrades to their station.

The Criteria for Special Assistance Grants are:

1. Is the proposed project operationally justified;
2. Vehicles:
  - Is the existing tanker greater than 20 year's old?
  - Is the proposed vehicle considered to be high priority?
  - Is the existing Field Command Vehicle greater than 5 years old?
3. Equipment, Volunteer Amenities or Minor Works
  - Is the item of equipment or station improvement critical for the Brigade operation?
4. The brigade is unable to fund the required brigade contribution

Brigades are to indicate their nominated contribution amount, if any, for a project.

### **Checklist of Information & Documents:**

- Districts justification for special assistance grant
- Reason's for brigade's inability to fund brigade total contribution
- Details of any purchases over the last three years
- Details of fund raising initiatives undertaken over the last three years
- Details of brigade Audit Financial Reports over the last three years
- Endorsement from Assistant Chief Fire Officer & Deputy Chief Officer

**DPC SPECIAL ACCESS LOCAL INITIATIVE**



<b>Contact Details</b>	<b>DPC</b>	
	<b>Contact</b>	
	<b>Phone No.</b>	
	<b>Email Address</b>	
<b>Description of proposal:</b>		
<b>Key objective / Benefits:</b> (What specific issue does this proposal address)		
<b>Brigades to Benefit</b>		
<b>Estimated Cost / Over what period</b>		
<b>Who will be responsible for the delivery of the proposal</b>		
<b>How will the proposal be delivered</b>		

<p>.....</p> <p><b>Chairman District .... Planning Committee</b></p> <p>.... / .... /</p>	<p>.....</p> <p><b>Assistant Chief Fire Officer District....</b></p> <p>.... / .... /</p>
---	---

---

Attachment 2

---

2021/22 CFA Program Guidelines

Guidelines are also available to download from the CFA website  
<https://www.members.cfa.vic.gov.au/mycfa/Show?pageId=bovVehicleAbout>



# **Volunteer Emergency Services Equipment Program (VESEP)**

## **CFA GUIDELINES – 2021/22**

---

# Contents

	<b>Introduction</b>	<b>Page</b> <b>3</b>
<b>1</b>	<b>Aim</b>	<b>3</b>
<b>2</b>	<b>Priority</b>	<b>3</b>
<b>3</b>	<b>Business Rules</b>	<b>3</b>
<b>4</b>	<b>Selection Criteria</b>	<b>3</b>
<b>5</b>	<b>Endorsed Projects</b>	<b>4</b>
<b>5.1</b>	<b>Tankers &amp; Big Fills</b>	<b>4</b>
<b>5.2</b>	<b>Specialist Appliances</b>	<b>4</b>
<b>5.3</b>	<b>Operational Equipment</b>	<b>5</b>
<b>5.4</b>	<b>Volunteer Amenities</b>	<b>5</b>
<b>5.5</b>	<b>Brigade Minor Works</b>	<b>5</b>
<b>6</b>	<b>Funding Formula</b>	<b>6</b>
<b>6.1</b>	<b>Tankers &amp; Big Fills</b>	<b>6</b>
<b>6.2</b>	<b>Specialist Appliances, Field Command Vehicles &amp; Operational Equipment</b>	<b>6</b>
<b>6.3</b>	<b>Volunteer Amenities</b>	<b>6</b>
<b>6.4</b>	<b>Brigade Minor Works</b>	<b>6</b>
<b>7</b>	<b>Funding Contribution Rules</b>	<b>6</b>
<b>7.1</b>	<b>Brigade</b>	<b>6</b>
<b>7.2</b>	<b>Volunteer Emergency Services Equipment Program</b>	<b>7</b>
<b>8</b>	<b>Application Process</b>	<b>7</b>
<b>9</b>	<b>Application Conditions</b>	<b>7</b>
<b>10</b>	<b>Special Access Grant</b>	<b>7</b>
<b>11</b>	<b>Maintenance</b>	<b>7</b>
<b>12</b>	<b>Future Replacement</b>	<b>8</b>
<b>13</b>	<b>Technical Requirements General</b>	<b>8</b>
<b>14</b>	<b>Project Contacts</b>	<b>8</b>
<b>15</b>	<b>Timelines</b>	<b>9</b>

## Introduction

The Minister for Emergency Services Mr Danny Pearson, MP recently announced the opening of the 2021/22 Victorian Emergency Services Equipment Program (VESEP). The program provides ongoing funding to assist eligible volunteer emergency services organisations with the acquisition of auxiliary equipment.

### 1. Aim

The aim of the CFA component of the VESEP program is to assist CFA Brigades and Groups through enhancing; operational safety, improving volunteer amenities, replacement or new auxiliary operational equipment, provision of training aides, specialist appliances, field command vehicles and the acquisition of vehicles to enhance their operational response capacity whilst having access to equipment and vehicles that are built to a standard ensuring the safety of volunteers.

### 2. Priority

The CFA VESEP Steering Committee has recommended the following categories as priorities for this funding round:

- Improvements to Volunteer amenities (eg: air conditioning, hot water service, furniture)
- Items that enhance operational safety and well being
- The provision of Brigade training aides (eg computers, white boards, projectors)
- New or replacement auxiliary operational equipment (eg: quick fill pumps, chainsaws, generators)
- Field Command Vehicles to assist fire ground management
- New or replacement specialist appliances
- The replacement of aged fire fighting appliances

Priority will be given to operationally justified items of equipment / vehicles in Brigades where it has been identified that there is a lack of capacity to fund these projects through Brigade or Community resources. To ensure equity, CFA will provide appropriate levels of support to Brigades where the community capacity to provide funding is limited (see 10. Special Access Grants below).

Additions to the firefighting fleet:

Any application to increase the size of the brigade owned fire fighting vehicle fleet will again be afforded a **low priority** and will require a full operational justification completed by the Assistant Chief Fire Officer (ACFO) and endorsed by the Regional Deputy Chief Officer (DCO).

### 3. Business Rules

The Business Rules are:

- Brigades / Groups can apply for only **one** project in 2021/22.
- The Chief Officer will be responsible for the overall management of the program.
- All funding applications must be endorsed and prioritised by the respective District Planning Committee's(DPC) and be consistent with District / Region Infrastructure Plans
- Any additions to the Brigade owned fleet will be subject to the approval of the Chief Officer.
- CFA will maintain approved tankers and specialist appliances to Level 1 maintenance.
- Projects commenced prior to Ministerial approval are not eligible for financial assistance.
- It is the responsibility of Brigade/Group to replace assets acquired under the program.
- All Minor works projects must be registered with the VESEP Minor Works Project Manager prior to submission of the application.

### 4. Selection Criteria

In addition to the selection criteria referred to in the brochure the following CFA criteria will apply and all applications will be assessed on these criteria:

- **Needs Assessment**
  - Is the vehicle / equipment operationally justified?
  - Is the vehicle / equipment suitable for the risks?
  - Is the primary appliance used on strike teams?



- **Risk Assessment**
  - What is the risk environment?
  - Is the risk environment changing?
  - What is the likelihood of a significant event (Rare, Unlikely, Moderate, Likely, Almost certain)?
  - What are the consequences of a significant event?
- **Ability to Crew and Operate**
  - Can the brigade adequately house the vehicle?
  - Can the brigade crew and operate the vehicle and/or equipment?
  - Does the Brigade have the appropriately trained personnel?
- **Benefit to the Community / Catchment**
  - Will the vehicle / equipment be used in the broader community?
  - Will the asset bring a benefit to the community?
  - Is the likelihood that the asset may be provided in the area by CFA / or other agencies ie Vic SES?
  - Will the improved amenities benefit the broader community?
- **Capacity to Fund**
  - Can the Brigade / Group fund the required vehicle / equipment contribution?
  - Can the Brigade / Group fund future maintenance and replacement of the vehicle / equipment?
- **Core Responsibility Factors**
  - Does the proposed asset use fall within the Brigade / Group core responsibilities?
- **Enhance Operational Readiness**
  - Will the asset assist in the Brigade / Group operational readiness / service delivery?

## 5. Endorsed Projects

Below is a list of the projects available through the VESEP program, all of these must be operationally justified.

Separate handouts / brochures are also available with vehicle descriptions, indicative costs and detailed specifications. (Refer to Section 14. *Project Contacts* for details on where to obtain further information).

### 5.1. Tankers & Big Fill's

VESEP 2021/22 will offer the following Appliances.

(Refer to 6.1 for funding formula)

- Light Tanker – Crew Cab
- Ultra-Light Tanker – Toyota Land Cruiser
- Big Fill – Toyota Land Cruiser
- Medium Tanker (note changed funding arrangements for additions to the fleet)

### 5.2. Specialist Appliances

Brigades / Groups wishing to apply for and build specialist appliances not listed in the program will be required to have the projects assessed and overseen by CFA Fleet and Protective Equipment and built by an approved body builder.

The program will offer the following Specialist Appliances (refer to 6.2 for funding formula):

- **Field Command Vehicles**  
Applications must be supported by a weight vehicle calculation pro forma if not the CFA standard build FCV. GVM upgrades will not be considered for any FCV's.  
The Weight vehicle calculation pro forma is available on *Brigades on Line – Brigade / Property & Equipment / Brigade Owned Vehicles / Equipment Information*.
- Multipurpose Vehicles
- Rehabilitation Vehicles

### 5.3. Operational Equipment

Some equipment examples are listed below, all will be considered on their respective merits: -  
(Refer to 6.2 for funding formula).

- Remote area lighting
- Staging area equipment
- Thermal imaging camera
- Hose testing trailer
- Hygiene unit trailer
- Audio visual training equipment
- Hose / branches
- Single / Dual axle big fill trailer
- Defibrillators

**Items not available under the program are:**

- Helmet Torches
- Breathing Apparatus
- Radios
- Major Capital Works >\$100K
- PFIT Kits
- Turn Out Systems
- GVM upgrades on FCV's

### 5.4. Volunteer Amenities Improvements

A priority for this funding round is to assist brigades with grants for small works and equipment that enhance CFA member amenities. The total value of these projects shall be less than \$5k in total (\$3,333 VESEP & \$1,667 Brigade contribution) and should be of a non structural nature, not requiring a building permit.

Examples may include:

- Air Conditioning
- Kitchen Refurbishment / Fridge
- Hot Water Services
- Crockery
- Cutlery
- Stove / Oven
- Furniture
- Table / Chairs

Any work undertaken may need to be inspected by the Asset Project Officer and should be carried out by a qualified trades person/s.

### 5.5. Brigade Minor Works

Funding will also be provided to assist Brigades to undertake minor works which will also enhance CFA member amenities, safety and wellbeing. The total project value is to be less than \$100k (\$66,667 VESEP & \$33,333 Brigade contribution).

Minor Works projects will require pre-registration, assessment and management by the VESEP Minor Works Project Manager and the Asset Project Officer.

It should be noted that a Town Planning permit will most likely be required (refer definition below). In this case the obtaining of all necessary planning and permit approvals will be coordinated through the VESEP Minor Works Project Manager as part of the project implementation.

Examples may include: -

- Motorization of motor room door/s
- Installation of garage / shed
- Male / Female turn out areas
- Static Generators (CFA specification)
- Extension to station
- Car park sealing
- PPC storage
- BBQ areas

#### Planning Permit

*In general terms, works which propose changes to the shape, size and external appearance of a building, or change site conditions which impact on the local amenity, council infrastructure and streetscape require a Planning Permit.*

*Example - Works involving building extensions (and alterations), modifications to hardstand areas which increase site water catchment and impact on council drainage systems, works involving tree removal and alterations to landscaping, works to crossovers outside property boundaries require Planning Permits.*

## Building Permit

A Building Permit is required under the Building Act (Victoria) for all building works unless the works being executed is deemed to be maintenance works – i.e., where the work involves the replacement of an existing item when completed, is substantially the same as the existing conditions. All work is required to be undertaken in accordance with National Code for Construction (NCCA) formerly Building Code of Australia (BCA).

Example - Any kitchen or bathroom upgrades undertaken at CFA sites require a building permit. Any physical alteration to the building structure will require a building permit and drawings from appropriate design consultants. **The value of works has no bearing on whether or not a Building Permit is required for CFA Buildings.**

## 6. Funding Formula

There are two sources of funding for this program, Brigade/Group and VESEP.

### 6.1. Tankers & Big Fill's

#### Crew Cab Light Tanker, Ultra Light Tanker & Big Fill Units

- \$2 VESEP to \$1 Brigade Cab Chassis cost

#### Body

- Funded by grant contribution

#### Medium Tanker – Addition to Fleet

- \$2 VESEP to \$1 Brigade total cost of vehicle

#### Medium Tanker – Replacement Tanker

- \$2 VESEP to \$1 Brigade Cab Chassis cost

#### Body – Replacement vehicle

- Funded by grant contribution

### 6.2. Specialist Appliances, Field Command Vehicles & Operational Equipment

- Specialist Appliances & Equipment are wholly funded by Brigades & VESEP as per the formula below.
- \$2 VESEP to \$1 Brigade – to a maximum VESEP contribution of \$150,000
- For replacement FCV's previously funded through the program the \$2:\$1 funding formula will now only be applied to the net change over value (ie cost less trade in value).

### 6.3 Volunteer Amenities Improvements

- \$2 VESEP to \$1 Brigade – to a maximum VESEP contribution of \$3,333

### 6.4 Brigade Minor Works

- \$2 VESEP to \$1 Brigade – to a maximum VESEP contribution of \$66,667

## 7. Funding Contribution Rules

### 7.1. Brigade

- Brigades / Groups must demonstrate the capacity to fund their portion of the project costs which may include an Extended Credit application.
- Special Access Grant Provisions – refer to Point 10 for guidelines.

## 7.2. Volunteer Emergency Services Equipment Program

- In most cases VESEP funds will not be released until completion of the project
- Projects commenced on or before Ministerial approval will not be eligible for VESEP funding

## 8. Application Process

**Step 1.** Brigade's / Group's to complete application forms in conjunction Commander, District staff and forward to the Assistant Chief Fire Officer for operational justification, and to ensure that the application is in accordance with the District Infrastructure Plan.

In the case of Amenities and Minor Works applications, the Asset Project Officer and the VESEP Minor Works Project Manager will be required to provide an assessment of the application to verify the scope of the proposed works, cost estimates and the deliverability of the project as a prerequisite to consideration of the application.

**Step 2.** Application forms to be reviewed at District Planning Committee (DPC), or DPC Sub-Committee, and priorities allocated to all applications.

**Step 3.** The Deputy Chief Officer reviews and provides comment on the DPC recommendations. All endorsed applications, along with supporting information, are forwarded to the VESEP Project Coordinator

**Step 4.** VESEP CFA Statewide Steering Committee meets to determine State wide priorities and seeks Chief Officer's endorsement. The VESEP Statewide Steering Committee consists of VFBV, Operational and Regional representatives.

**Step 5.** CFA recommendations forwarded to the VESEP Emergency Management Victoria Committee, who will consider submissions from all participating agencies prior to seeking Ministerial approval.

**Step 6.** Minister announces approved projects

## 9. Application Conditions

- **Brigades / Groups may apply for only one project in 2021/22**
- Approval for funding for a replacement tanker or specialist appliance is conditional on providing proof of disposal of an existing Brigade owned, or community owned tanker
- Tankers less than 20 years of age will not be considered for replacement unless in poor mechanical condition
- Slip On less than 12 years of age will not be considered for replacement unless in poor mechanical condition.
- FCV Vehicles under five (5) years of age will not be considered for replacement under the program
- Applications for Minor Works projects must be submitted prior to the application closing date with the VESEP Minor Works Project Manager for assessment prior to consideration by the Statewide Steering Committee
- Projects which commence prior to the Ministers approval, will not receive any financial assistance from VESEP
- Offers of funding must be accepted within 60 days of receipt of offer or the offer may be withdrawn
- Incomplete applications will be returned to the District and not considered for VESEP 2021/22 funding
- CFA will coordinate the VESEP applications from CFA Brigades and Groups
- Brigades / Groups will be required to enter into an agreement to cover the proposed funding arrangements

## 10. Special Access Grant

Provisions are available for all VESEP projects that are operationally justified. The Brigade / Group should indicate a voluntary contribution amount, if any, with their application. All special access grant applications require an accompanying endorsement from the Regional Deputy Chief Officer justifying the application. Brigades wishing to access this facility are to contact their Assistant Chief Fire Officer to discuss progression of an application.

## 11. Maintenance

- Successful applications for the tankers listed under the Tankers in 5.1 and Specialist appliances (excluding FCV's) listed under 5.2 will attract level 1 full DMO maintenance support.
- All other appliances will receive a Brigade owned maintenance allowance as approved by the District

## 12. Future Replacement

As part of the conditions relating to the offer of funding, Brigades / Groups are required to accept responsibility for the future replacement of the vehicle or item of equipment. Whilst CFA does not undertake to replace the vehicle or equipment when it reaches the end of its life, consideration for replacement may be given on a merit basis.

Each Brigade / Group is to prepare a financial plan for funding the replacement of the vehicle or equipment when it reaches the end of its operational life – as deemed by CFA Policy.

## 13. Technical Requirements – General

Any Cab chassis, which can be new or used, must comply with current CFA specifications. Funding will not be approved to assist Brigades / Groups acquire a cab chassis that does not meet CFA current specifications.

Any new cab chassis purchased by Brigades / Groups must be modified to meet CFA standards at Brigade expense.

Secondhand cab chassis under 5 years old will only be accepted after a DMO inspection to the satisfaction of the Assistant Chief Fire Officer. The inspection will include roadworthiness and robustness relevant to the proposed use and lifespan as a firefighting vehicle.

## 14. Project Contacts

Further information and assistance can be obtained through the following channels: -

Ask your **Assistant Chief Fire Officer** or **Commander**

Or

**CFA's Brigades Online** contains all documentation including vehicle descriptions, indicative costs and specifications. This information can be found by going to: Brigades Online home > Brigade > Property & Equipment > Brigade Owned Vehicles > Current VESEP>Details

<https://www.members.cfa.vic.gov.au/mycfa/Show?pagelD=bovVehicleAbout>

**CFA's Intranet:** This information can be found by going to Intranet home > Operations > Firefighting vehicles > Brigade Owned Vehicles > Current VESEP Details

Or

**VFVB Website:** Application assistance can be obtained via VFVB Field Officers  
[www.vfbv.com.au/vesep.php](http://www.vfbv.com.au/vesep.php)

Diane Frost  
VESEP Project Coordinator  
☎: 9262 8630  
Email: [d.frost@cfa.vic.gov.au](mailto:d.frost@cfa.vic.gov.au)

### Minor Works Projects

Georgia Fine  
Executive Manager Land & Building /  
VESEP Minor Works Project Manager  
Email: [g.fine@cfa.vic.gov.au](mailto:g.fine@cfa.vic.gov.au)

**15. Timelines - *Anticipated dates and maybe subject to change***

Dates	Process
23 <sup>rd</sup> April 2021	Application's Open
18 <sup>th</sup> June 2021	<b>Applications Close</b> - <i>Completed application forms along with relevant documentation should be forwarded to your District Assistant Chief Fire Officer for processing</i>
19 <sup>th</sup> June – 4 <sup>th</sup> July	District Planning Committee (DPC) or designated sub committee prioritises applications. Assistant Chief Officer to review and provide comment on the recommendations
9 <sup>th</sup> July	All applications forwarded to CFA VESEP Project Coordinator
1 <sup>st</sup> September	<p>CFA VESEP Steering Committee meets to determine State wide priorities.</p> <p><b>Steering Committee Representatives: -</b>  <b>Chair:</b> Executive Director, Infrastructure Services            VFBV Executive Officer            VFBV District Representatives, x 3            Deputy Chief Officer Volunteer Sustainability            Deputy Chief Officer x 2            Manager Infrastructure Planning            VESEP Project Coordinator</p> <p><b>Advisors: -</b>            Executive Manager, Fleet and Protective Equipment            Assistant Chief Fire Officer Structural Fire Planning            Assistant Chief Fire Officer Wildfire Planning &amp; Forest Industry Brigades            VESEP Minor Works Project Manager, Land &amp; Buildings</p>
3 <sup>rd</sup> September	Chief Officer meeting to review recommendations and statewide initiatives
7 <sup>th</sup> September	EMV meets with all agencies to review priorities and seek Ministerial approval of projects
Mid September	EMV forwards all agency recommendations for Ministerial approval
End September	Anticipated Ministers announcement and advice forwarded to successful Brigades
End September	CFA advises all applicants of funding outcomes

- *The Minister will formally advise the successful applicants*



---

## Attachment 3

---

### CFA Application Forms

Forms are also available to download from the CFA website

<https://www.members.cfa.vic.gov.au/mycfa/Show?pageId=bovVehicleAbout>

1.	Part A: Vehicles and Operational Equipment Application Form	p 2
2.	Part B: Volunteer Amenities and Minor Works Application Form	p 4
3.	Addition to the Firefighting Fleet Appliance Fleet Operational Justification Form	p 6
4.	Vehicle Weight Proforma for VESEP Applications	p 9

# 2021/22 Volunteer Emergency Services Equipment Program

## Part A: Vehicles and Operational Equipment Application

Date:     /     /

District:

Brigade/Group Name

Brigade/Group No:

Region:

DPC Priority Ranking:

### Contact for Project:

Name:			
Phone:		Mobile:	
Email:			
Postal:			
		Postcode:	

### Privacy Collection Statement

CFA is collecting this information for the purpose of the Volunteer Emergency Services Equipment program. The personal information provided will be used to assist us in communicating with you for the purpose of this grant and will also be provided to Emergency Management Victoria Senior Grants Officer and if successful to suppliers. You are not required by law to provide us with this information however if you choose not to this will hinder the ability for you to obtain a grant. This information will be held at CFA HQ's by the VESEP Project Coordinator, who can be contacted by phone on 9262 8630 or email VESEPProject@cfa.vic.gov.au

### Proposed Vehicle or Operational Equipment:

Item	Type/Description	Estimated Cost	Addition	Replace
Vehicle *		\$	<input type="checkbox"/>	<input type="checkbox"/>
Operational Equipment		\$	<input type="checkbox"/>	<input type="checkbox"/>

\* FCV applications (excluding the CFA standard build) must include a vehicle weight calculation pro forma available on Brigades on Line

### Current Brigade Vehicles: - If applying for a replacement vehicle indicate vehicles being replaced

Model/Size	Registration	Owned (CFA/Brigade)	Year	Age	Details	Replacing
						<input type="checkbox"/>
						<input type="checkbox"/>
						<input type="checkbox"/>

### Brigade Information: -Additional brigade information or comments can be provided on a separate document

How will the Brigade consistently crew and operate vehicles and/or equipment?	
If the proposed vehicle is an addition provide details of where the vehicle is to be housed,	
Does the Vehicle / Equipment meet the Regional Strategic Resourcing Plan? (provide detail) <input type="checkbox"/> Yes <input type="checkbox"/> No	
Brigade Turnouts per year:	
Is the future Population / Risk Environment trending up or down:	
Time Distance from Next Responding Brigade	
	Min

### Brigade Finances:

Total Brigade Funds: Attach supporting evidence. Eg: (CFA Audit Report, Bank Statements or Brigade Financial Plan)	\$
Disposal of Vehicles being replaced: (Attach evidence eg: Trade-in valuation)	\$
CFA Extended Credit: (Only applicable if Brigade intend to apply)	\$

### Project Costs: - excluding GST

Brigade Contribution:	\$	Total Grant Contribution	\$
		Total Project Cost	\$



# 2021/22 Volunteer Emergency Services Equipment Program

## Part B: Volunteer Amenities and Minor Works Application



Date:     /     /       
 Brigade/Group Name  
 Region:

District:  
 Brigade/Group No:  
 DPC Priority Ranking:

### Privacy Collection Statement

CFA is collecting this information for the purpose of the Volunteer Emergency Services Equipment program. The personal information provided will be used to assist us in communicating with you for the purpose of this grant and will also be provided to Emergency Management Victoria Senior Grants Officer and if successful to suppliers. You are not required by law to provide us with this information however if you choose not to this will hinder the ability for you to obtain a grant. This information will be held at CFA HQ's by the VESEP Project Coordinator, who can be contacted by phone on 9262 8630 or email VESEPProject@cfa.vic.gov.au

### Contact for Project:

Name:			
Phone:		Mobile:	
Email:			
Postal:			Postcode:

### Proposed Volunteer Amenities or Minor Works:

Item	Type/Description	Estimated Cost
Volunteer Amenities <\$5k		\$
Minor Work < \$100k	Summary:  (Attach detailed information eg Quotations)	\$

### Brigade Information: -Additional brigade information or comments can be provided on a separate document

Brigade Membership No:	
Is the future Population / Risk Environment trending up or down:	
Is the facility used regularly by the broader Community	

### Brigade Finances:

Total Brigade Funds: Attach supporting evidence. Eg: (CFA Audit Report, Bank Statements or Brigade Financial Plan)	\$
CFA Extended Credit: (Only applicable if Brigade intend to apply)	\$

### Project Costs: - excluding GST

Brigade Contribution:	\$	VESEP Contribution	\$
		Total Project Cost	\$

# VESEP Selection Criteria & Endorsement

This section is to be completed by the District

AMENITIES <\$5k		
• A quote is to be submitted with application inclusive of associated works required (eg: installation, modifications to switch board)	Yes	No
• Has the application been discussed and endorsed by the Assistant Chief Fire Officer	Yes	No
• Does the project require certification from a qualified trades person on completion	Yes	No
• Is there sufficient power allocation to the site to accommodate future demand	Yes	No
MINOR WORKS <\$100k		
• Has the proposed project been registered with VESEP Minor Works Project Manager	Yes	No
• Has the project been fully scoped and documented with detailed plans available	Yes	No
• Has a minimum of 2-3 competitive quotes been obtained	Yes	No
• Does the project require a Building Permit or Town Planning (if unknown Project Manager will advise)	Yes	No
• Has the application been discussed and endorsed by the Assistant Chief Fire Officer	Yes	No
• Is the Brigade aware that a commercial builder is required for all extensions / modifications	Yes	No
• Is the Brigade proposing to provide work in kind, if so, provide details with application <b>Note:</b> In kind works may reduce the total cost of a project however a 1/3 <sup>rd</sup> monetary contribution is required	Yes	No
<b>District Comments:</b>		
 <b>APO Comments:</b>		
Signed:		Date: / /

## 1. Benefit to the Community / Catchment

- Will the asset be of benefit to the broader community?  Yes  No

## 2. Capacity to Fund

- Can the Brigade fund future maintenance & replacement of the asset  Yes  No

## 3. Core Responsibility Factors

- Does the proposed asset use fall within the Brigade core responsibilities?  Yes  No

## 4. Enhance Operational Readiness

- Will the asset assist in the Brigade/Unit's operational readiness/service delivery?  Yes  No

## 5. District Comments:- *(Rationale comments are included with recommendations forwarded to EMV and may be used in other correspondence)*

### Recommendation and Endorsement

#### DPC Endorsement

Meeting Date: / / .....  Endorsed  Not Endorsed .....

#### Assistant Chief Fire Officer

Name: ..... Signature: ..... Date: / /

#### Deputy Chief Officer Endorsement

Name: ..... Signature: ..... Date: / /

# Volunteer Emergency Services Equipment Program



## Addition to the Fire Fighting Appliance Fleet Operational Justification

---

**Brigade/Group Name:**

**District:**

**Brigade Contact:**

---

### Brigade Summary

Membership	Number	Incident	Number
Operational		Primary	
Non Operational		Support	
Population			

---

### Current Vehicles (RMS Resource Summary)

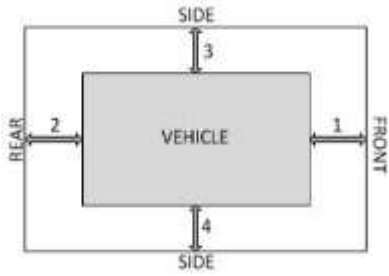
Model/Size	Owner (CFA or Brigade)	Year	Age

---

**Details of where the appliance will be housed:**

---

**Appliance Clearances at Housed Location**



Appliance Measurements	Width (Excluding Mirrors)	Length	Height
FCV	2m	6m	2m
ULT	1.94m	5.62m	2.06m
Light Tanker	2.14m	6.62m	2.8m
Medium Tanker	2.85m	7.35m	3m

(1) Front Length Measurement:	
(2) Rear Length Measurement:	
(3) Side Width Measurement:	
(4) Side Width Measurement:	

**Brigade Operational Profile**

**Changes to Risk Environment**

**DPC Comment**

**Operational Justification**

--



**Approval**

<p><b>Assistant Chief Fire Officer</b></p>          <p>..... Date:</p>	<p><b>Deputy Chief Officer Endorsement</b></p>          <p>..... Date:</p>	<p><b>Chief Officer Approval</b></p>          <p>..... Date:</p>
--	--	--



## Vehicle Weight Proforma for VESEP Applications

---

Brigade / Group Name: .....

Proposed Vehicle Make: .....

Proposed Vehicle Model: .....

Vehicle Type: Single Cab / Dual Cab / Wagon

Vehicle GVM according to Manufacturers specification: .....

Number of Seats in Vehicle: .....

Transmission: Manual / Automatic

Accessories:

Note: Bull bars, snorkels, driving light mounting, etc. must be genuine accessories.

Accessories	Yes / No	Approximate Weight
Steel Bull Bar		80 kg
Alloy Bull Bar		55 kg
Draw System		85 kg
Fridge		25 kg
CFA Recovery Kit		20 kg
Slabs of water		15 kg per slab
Other Equipment		kg
Total Weight of Accessories		kg

Weight Calculations:

Line	Details	Weights
1	GVM of Vehicle (Refer to Weight Loadings for Common FCV document)	kg
2	Tare Weight of vehicle according to manufacturer's specification (Refer to Weight Loadings for Common FCV document)	kg
3	Total Weight of accessories (As per table above)	kg
4	Add weight of Accessories to Tare Weight = TOTAL VEHICLE WEIGHT (Line 2 weight plus line 3 weight)	kg
5	Subtract the TOTAL VEHICLE WEIGHT from GVM OF VEHICLE = weight available for passengers. (Line 4 weight minus line weight 1)	Kg
6	Divide weight available for passengers by 100kgs to determine number of passengers including driver the vehicle can legally carry (Divide Line 5 weight by 114 = passenger number)	Passenger Number

Note: A GVM upgrade will not be considered for a FCV vehicle.

Please forward completed form with VESEP Application



VOLUNTEER FIRE  
BRIGADES VICTORIA



## Appendix – CFA Information Sheets - 2021

## Table of Contents

### Appendix – CFA Information Sheets

All information sheets are also available to download from the CFA website  
<https://www.members.cfa.vic.gov.au/mycfa/Show?pageId=bovVehicleAbout>

1.	VESEP Tanker Costs	p 3
2.	VESEP Ultra-Light Tanker Specifications	p 4
3.	VESEP Light Tanker Specifications	p 11
4.	VESEP Medium Tanker Specifications	p 20
5.	FCV Common Vehicle Weights	p 23
6.	VESEP FCV – Brigade Build Specifications	p 25
7.	VESEP FCV – Standard Build Specifications	p 26
8.	VESEP Big Fill Trailer Tandem Axle Trailer Pump	p 30
9.	VESEP Single Axle Trailer Pump	p 32
10.	VESEP General Purpose Trailer	p 34
11.	VESEP Personal Protective Clothing Chainsaw Operations	p 38
12.	VESEP Remote Area Lighting System	p 39
13.	Vegetation Management Side x Side Vehicle	p 40
14.	Thermal Imaging Camera	p 42
15.	Big Fill	p 43
16.	Rehabilitation Unit	p 50
17.	Multi-Purpose Vehicle	p 51
18.	Volunteer Amenities	p 55
19.	Minor Works	p 56

# Tanker Costs – VESEP 2021/22



**Pricing - Indicative @ April 2021**

Funding Source	ULT Landcruiser	Light Tanker Crew Cab	Medium Tanker Addition to Fleet	Medium Tanker Replacement Tanker
Brigade	\$ 22,500	\$ 30,000	\$ 126,667	\$ 58,333
Grant Contribution	\$125,000	\$ 195,000	\$ 253,333	\$ 321,667
<b>Total</b>	<b>\$147,500</b>	<b>\$ 222,500</b>	<b>\$ 380,000</b>	<b>\$ 380,000</b>

Cost escalation to point of build in 2021/22 allow up to 10% increase.  
Options available on some appliances at Brigade cost

## Specifications

Detailed information regarding these appliances is available via Brigades on line:-  
*Brigade, Property & Equipment, Brigade Owned Vehicles, VESEP, Tanker information*

## Grant Formulas

### ULT, Light & Medium Tanker (Replacements)

#### Cab Chassis

- \$2 VESEP to \$1 Brigade to a maximum VESEP contribution of \$100,000

#### Body

- Funded by grant contribution

### Medium Tanker – Additions to Fleet

**Body & Cab Chassis** - \$2 VESEP to \$1 Brigade



### Overview

The Ultra-Light Tanker delivers increased water, enhanced fire suppression capability and ergonomic features. This vehicle is licensed to carry 2 people including the driver. The vehicle has a manual transmission and does not require an endorsed licence to drive. The body and cab chassis conform to CFA operational safety standards. These appliances are not designed to have personnel operating from the tray area. The ULT's primary role for wildfire is to perform first attack on spot sized / remote / difficult-to-access types of fires where these fires are safe to approach. It is also designed to perform support for back operations, mopping up and patrolling duties.

### Cab Chassis – Toyota LandCruiser

Toyota LandCruiser 70 series Workmate 4x4 MY20 cab chassis. The Toyota LandCruiser is an upgraded 3.95 tonne GVM cab chassis with air-conditioning, aftermarket wide alloy wheels, all-terrain tyres and 100 litre fuel tank. The vehicle includes reversing camera, reversing alarm, map light, 2 x fire blankets, 2 x drink bottle holders, CFA map book holder, siren and emergency light controller, portable radio charger and CFA radio speakers.

### Body Features

- Full aluminium construction, water-cooled diesel engine pump, locker/pump panel lights parking lights switched.
- Full LED lighting including emergency lights, colour coded valve handles and angled pump control panel.
- 550 litre (nominal) water tank capacity, live hose reel with 30mx19mm light weight hose and Dial-A-Jet branch, 1 x 65mm delivery, 1 x 20-230 lpm selectable flow nozzle, 1 x air-aspirating foam nozzle, Dosatron foam system, LED work lights, 5.5m permanently connected suction hose.
- Supply and installation of radio (CFA and UHF), lights and sirens, battery guard
- Supply and fitment of decals
- Chainsaw & ancillary equipment

### Provision of tools and equipment

- 4 x aluminium lockers, 2 x rake hoes, shovel, 2 x drip torches, tool box, emergency Class "A" foam kit, first aid kit, collapsible knapsack, service hydrant, 4.5kg AB dry chemical extinguisher, Hazmat guidebook.



### Indicative Costs

Cab Chassis Costs Funding By Brigade & VESEP \$67,500

#### Funding Break up

Brigade Contribution \$22,500

Grant Contribution \$125,000

**Total Project Costs \$147,500**

Indicative prices as at April 2021 (excludes GST)

Cost escalation to point of build in 2021/22 up to 10% increase



**BRIGADE OWNED VEHICLE BUILD-UP**  
**Ultra-Light Tanker**  
**(VESEP 2021/22)**

**1. CAB CHASSIS (VESEP / **Brigade Cost**)**

**Cab Chassis and associated fitments/equipment – including modifications to conform to CFA's operational safety standards**

DESCRIPTION
1.1 <b>Toyota LandCruiser 70 Series Workmate</b> (or equivalent) cab chassis of 4WD (4x4) configuration and a two (2) person single cabin with 5 Star ANCAP safety rating
1.2 Cab chassis powered by a common rail direct injection turbo charged 4.5 litre V8 diesel engine with air to air intercooler. (Maximum Power: 151kW @ 3,400 RPM. Maximum Torque: 430Nm @ 1,200-3,200 RPM) compliant with ADR 80/03 (Euro 5) Emission Standards
1.3 Gross vehicle mass rating (GVM) 3,950kg ( <b>uprated by Pedders</b> )
1.4 Front Axle capacity rating 1,540kg ( <b>uprated by Pedders</b> )
1.5 Rear Axle capacity rating 2,420kg ( <b>uprated by Pedders</b> )
1.6 Wheelbase 3,180mm
1.7 Turning circle 14.4m kerb-to-kerb
1.8 Manual transmission with five (5) forward gears and one (1) reverse gear (with dual range transfer case)
1.9 Automatic locking front hubs
1.10 Ventilated disc service brakes fitted with ABS, Brake Assist, Vehicle Stability Control, Hill Start Assist Control, Electronic Brake Force Distribution and Active Traction Control
1.11 Five (5) 16" x 7" alloy rims (non-standard) fitted with all-terrain tyres (including spare wheel)
1.12 Fuel tank capacity 100 litres (non-standard)
1.13 Cabin interior including engine immobilizer, cruise control, idle-up control, tilt and telescopic steering column, power steering, fully integrated air-conditioning, driver and passenger SRS airbags, curtain shield and driver's knee airbags, emergency locking retractor seatbelts
1.14 Front seating incorporating: <ul style="list-style-type: none"> <li>• Standard bucket style driver's seat suitable for off-road operation</li> <li>• Standard bucket style passenger seat</li> </ul>
1.15 Air cleaner snorkel fitted to the engine air intake and air cleaner fitted with a flameproof air filter element (non-standard)
1.16 12V electrical system c/w 130 ampere alternator
1.17 Polished aluminium bull bar
1.18 3,500kg rated towbar, c/w towball and wiring
1.19 Bonnet protector
1.20 Two (2) headlight protectors
1.21 Intercooler bonnet guard
1.22 Steering arm protector
1.23 Engine turbo air intake heat shield
1.24 Two (2) front wheel fender flares
1.25 Two (2) rubber floor mats
1.26 Vehicle's exhaust discharges to rear of vehicle on nearside
1.27 Includes CFA Ergonomic Vehicle Design Guidelines (in its latest version) applied to equipment designs wherever practical
1.28 Compliance to Australian Design Rules (ADR's), relevant standards, regulations and Codes of Practice

## 2. **FIRE PUMP & PLUMBING** (VESEP Cost)

### Fire Pump Set and Associated Equipment

DESCRIPTION	
2.1	<b>GAAM Mk70 / Kubota Z482</b> (or equivalent) single-stage centrifugal fire pump close coupled to a water-cooled diesel engine, with a minimum closed pump pressure of 900 kPa and a nominal flow rate of 500 litres/min. at 500 kPa – sufficient for two (2) 38mm lines with a 3 metre suction lift
2.2	Pump priming performed by a hand-operated diaphragm pump
2.3	Pump plumbing arrangement (All plumbing manufactured from stainless steel) <ul style="list-style-type: none"> <li>• Delivery manifold consisting of one (1) 65mm Storz coupling outlet</li> <li>• <b>“Tank Fill Line Draughting”</b> plumbing originating from the delivery manifold</li> <li>• Suction Manifold consisting of a separate permanently connected 5.5m x 64mm flexible suction hose with 75mm Storz couplings and suction strainer, and a 64mm water tank inlet</li> <li>• Separate 38mm water <b>“Tank Fill”</b> line fitted with a 38mm external lug coupling</li> <li>• Pump cooling (bleed) line including in-line strainer and check valve</li> </ul>
2.4	Pump engine fitted with 12V starter motor, 12V <b>“Energise to Stop”</b> solenoid and controls (powered from cab chassis 12V battery)
2.5	Pump controls and instrument panel mounted at the rear of the vehicle
2.6	Pump engine fuel system supplied from the cab chassis diesel fuel tank via a separate 12V fuel pump, header tank and fuel filter
2.7	Pump engine exhaust system discharges to rear of vehicle on nearside
2.8	Includes CFA Ergonomic Vehicle Design Guidelines (in its latest version) applied to equipment designs wherever practical



### 3. **BODYWORK** (VESEP Cost)

#### Bodywork Build-up Arrangement

DESCRIPTION	
3.1	Aluminium tray frame
3.2	Front of the tray frame fitted with an aluminium light mounting frame (headboard)
3.3	Rear of the tray frame fitted with an aluminium light mounting frame
3.4	Two (2) aluminium stowage lockers (NS1 & NS2, including stowage brackets and listed stowage equipment) located above tray on the nearside front of the body
3.5	Two (2) aluminium stowage locker (OS1 & OS2, including stowage brackets and listed stowage equipment) located above tray on the offside front of the body
3.6	One (1) aluminium stowage locker (Standpipe locker, including stowage brackets and listed stowage equipment) located below tray on the nearside rear of the body
3.7	One (1) aluminium stowage locker (Suction Hose locker, including stowage brackets and listed stowage equipment) located below tray on the offside rear of the body
3.8	One (1) 550 litre nominal capacity fabricated aluminium water tank complete with one (1) sight level gauge, centrally located on the tray frame
3.9	One (1) live hose reel c/w 30m x 19mm lightweight <b>Neidner</b> hose and 1 x <b>Dial-A-Jet</b> nozzle
3.10	Live hose reel fitted with a <b>Dosatron</b> Foam System c/w "Off/Water/Foam" 3-way selector valve
3.11	Rear wheels fitted with aluminium mudguards
3.12	CFA radio c/w hand held control head and ignition relay
3.13	CFA portable radio charger (supplied with a CFA portable radio, if vehicle is additional to fleet)
3.14	External rear speaker for CFA radio (mounted on front light mounting frame)
3.15	<b>GME XRS-370C</b> UHF CB radio
3.16	Reversing camera c/w in-dash display
3.17	Reversing buzzer
3.18	<b>Hazard Systems CS202</b> Hand-Held Siren/Light Controller (or equivalent) with control pad mounted on cabin dash and 100W speaker mounted on bull bar
3.19	Flashing headlights (alternate flashing)
3.20	Four (4) red and blue LED hazard lights (2 at front and 2 at rear of appliance)
3.21	One (1) red and blue LED mini light bar (mounted on front light mounting frame)
3.22	Two (2) LED scene lights (mounted on front light mounting frame)
3.23	One (1) Pump Bay LED scene light (mounted on rear light mounting frame)
3.24	One (1) Rear LED scene light (mounted on rear light mounting frame)
3.25	Two (2) LED combination rear tail/stop/indicator/reversing lamps (on rear bumper bar)
3.26	Two (2) LED reversing lights angled at 45° (c/w separate switch)
3.27	LED locker lights
3.28	LED flexible arm map light in cabin
3.29	<b>Intellitec Battery Guard</b> battery management system with Reset button located on cabin dash
3.30	CFA reflective Red/Yellow chequer striping, reflective yellow striping at rear and outline profile of body and cabin, CFA logos, " <b>FIRE</b> ", " <b>Emergency 000</b> " and " <b>Brigade Name</b> " decals and " <b>Aerial ID</b> " number
3.31	Cabin engraved nameplates and decals
3.32	Weighbridge certificate of completed appliance ( <u>typical</u> )
3.33	Registration
3.34	Operating instructions
3.35	Stowage supplied as per Section 4
3.36	Includes CFA Ergonomic Vehicle Design Guidelines (in its latest version) applied to equipment designs wherever practical
3.37	Compliance to Australian Design Rules (ADR's), relevant standards, regulations and Codes of Practice



#### 4. **STOWAGE** (VESEP / **Brigade Cost**)

CFA-approved Stowage equipment supplied as follows:

Description	Contractor and/or CFA F&PE to Supply	CFA Brigade to Supply (see Note)
<b>Cabin Stowage</b>		
2 x 600ml drink bottles		✓
CFA Map book(s)		✓
2 x Crew		✓
1 x CFA Portable Radio (either supplied by CFA after delivery if vehicle is <u>additional</u> to fleet, or supplied by Brigade after delivery if a <u>replacement</u> vehicle)	✓	✓
2 x All-weather rubber floor mats	✓	
1 x Cab Chassis Jack, Jack handle, Spare Wheel Winch Handle and Tools	✓	
1 x Cab Chassis Operating Manual	✓	
1 x Pump Operating Manual	✓	
1 x CFA Vehicle & Pump Log Book	✓	
1 x CFA Radio Operating Manual	✓	
1 x Tanker Operating and Spare Parts Manual	✓	
1 x <b>Dosatron</b> Foam System Operating Manual	✓	
2 x Crew protection blankets – 1.8m x 2m - Red ( <b>CFA Part No. BLANKET</b> )	✓	
1 x “ <b>SAA/ANZ HB 76:2010 Dangerous Goods – Initial Emergency Response Guide</b> ” book	✓	
<b>Front Nearside (PPE) Locker - (NS1)</b>		20kg max. capacity
2 x Crew turn out bags		✓
<b>Rear Nearside (Hose) Locker - (NS2)</b>		
1 x 15 metre x 64mm <b>Duraline</b> delivery hose with 65mm Storz couplings ( <b>CFA Part No. HDURALINE64CST15M</b> )	✓	
2 x 30 metre x 38mm synthetic delivery hoses with 38mm external lug couplings ( <b>CFA Part No. HOSETW38CP30M</b> )	✓	
2 x 30 metre x 25mm synthetic delivery hoses with 38mm external lug couplings ( <b>CFA Part No. HOSETW25CP30M</b> )	✓	
1 x 10 metre x 38mm <b>Duraline</b> delivery hose with 38mm external lug couplings	✓	
1 x 65mm Storz to 64mm x 3TPI female loose nut adaptor	✓	
1 x 65mm Storz to 64mm x 5TPI female loose nut adaptor	✓	
1 x 65mm Storz to 64mm x 3TPI male adaptor	✓	
1 x 65mm Storz to 75mm Storz adaptor	✓	
1 x <b>TFT DQ-ECF-BD Quadrafog</b> 20-230 litres/min. 500kPa selectable flow nozzle with <b>TFT D75DP-BD</b> ball valve, blue bale arm, blue pistol grip and 38mm external lug coupling	✓	
1 x <b>TFT AYLND-NF</b> long handle forestry gated Wye outlet c/w 3 x 38mm external lug couplings	✓	
1 x <b>Scotty 4080</b> pistol grip bale shut-off fitted with <b>Scotty 4020</b> air aspirating foam nozzle and 38mm external lug coupling	✓	
2 x “ <b>OneKey</b> ” spanners ( <b>CFA Part No. SSONEKEY</b> )	✓	
<b>Rear Nearside Under-Tray (Standpipe) Locker</b>		
1 x CFA-approved aluminium long barrel service hydrant / standpipe c/w 65mm Storz couplings and 1 x blank cap with chain ( <b>CFA Part No. HYDALTWLST</b> )	✓	
1 x Standpipe key holder c/w 1 x “ <b>OneKey</b> ” spanner ( <b>CFA Part No. SSONEKEY</b> )	✓	
<b>Front Offside (Welfare) Locker - (OS1)</b>		20kg max. capacity
1 x Drink cooler (“Esky”)	✓	

Description	Contractor and/or CFA F&PE to Supply	CFA Brigade to Supply (see Note)
600ml drink bottles (quantity to suit drink cooler)		✓
1 x CFA First Aid Kit (CFA Part No. F2CFA)	✓	
<b>Rear Offside (Chainsaw) Locker - (OS2)</b>		
1 x <b>Stihl MS311 FarmBoss</b> chainsaw c/w 45-50cm bar and drip tray	✓	
1 x Chainsaw helmet (CFA Part No. HELMCS)	✓	
1 x Earmuffs (pair) (CFA Part No. HELMCSEMUFF)	✓	
1 x Visor (CFA Part No. HELMCSVISOR)	✓	
1 x Chainsaw chaps - Medium (100cm) (CFA Part No. CHAPSCSM)	✓	
1 x <b>Stihl</b> 3/8" chainsaw chain sharpening kit (to suit the <b>Stihl MS311</b> chainsaw)	✓	
1 x <b>Scepter 03615</b> combination chainsaw fuel (6 litre) and chain / bar oil (2.25 litre) canister c/w (CFA Part No. FUELSTROKE50) and (CFA Part No. FUELCHAIN) identification tags	✓	
1 x 5 litre fire lighter / drip torch metal fuel container c/w identification tag	✓	
1 x small tool bag c/w basic tool assortment	✓	
1 x Plastic funnel (to suit chainsaw & drip torch)	✓	
1 x <b>Firelogistics Backcare Boss 40-001-2603-0192</b> collapsible knapsack	✓	
1 x Short handle bolt cutters	✓	
1 x Emergency "A" Class foam kit	✓	
1 x Suction hose float c/w chain and "D" shackle	✓	
1 x <b>Angus STRBASK75 (Hoening)</b> stainless steel wire mesh basket strainer	✓	
1 x 10 metre x 12mm synthetic rope	✓	
1 x 4.5kg ABE dry chemical fire extinguisher	✓	
<b>Rear Offside Under-Tray (Suction Hose) Locker</b>		
1 x 5.5 metre x 65mm (pre-connected) flexible suction hose c/w 75mm Storz couplings and 1 x 250mm long stainless steel suction strainer with 75mm Storz coupling	✓	
<b>Tray Stowage</b>		
2 x 4 litre <b>Firebug</b> fixed wand fire lighters / drip torches	✓	
1 x 20 litre <b>Phoscheck WD881</b> Class 'A' foam drum (CFA Part No. FOAMAC20L)	✓	
1 x 30 metre x 19mm lightweight <b>Neidner</b> (or equivalent) delivery hose c/w 38mm external lug coupling and 1 x <b>SCOTTY "DIAL-A-JET"</b> rotary nozzle c/w 38mm external lug coupling (on live hose reel)	✓	
1 x 65mm Storz to 38mm external lug adaptor (CFA Part No. ST6538ULC)	✓	
1 x Live hose reel rewind handle	✓	
<b>Below-Tray Stowage</b>		
2 x Rake hoes (CFA Part No. RAKEHOEM)	✓	
2 x Wheel chocks	✓	
1 x Removable tongue c/w towball for towbar	✓	
1 x Spare wheel and tyre	✓	
<b>Between Cabin and Tray Stowage</b>		
1 x Long handle shovel	✓	
1 x Axe	✓	
1 x Pulaski	✓	
<b>Water Tank</b>		
1 x Removable strainer (in overhead water tank filler)	✓	

**Note: Additional stowage items are not approved**

Summary Specification Prepared By:  
CFA Fleet and Protective Equipment

Issue 7  
14 April 2021

### Overview

A new appliance to the CFA fleet, this crew cab light tanker has a nominal 2,000 litre tank which will include a new body and a new diesel powered pump. The body is mounted on an Isuzu NPS 75-155 4 x 4 crew cab chassis. The body and cab chassis conform to CFA operational safety standards.

### Cab Chassis

Isuzu NPS 75-155 cab chassis of 4WD (4x4) crew cab configuration and (uprated) 8.0T GVM, powered by a turbocharged diesel engine with nominal maximum power output: 114 kW @ 2,600 RPM and nominal maximum torque output: 419 Nm @ 1,600 – 2,600 RPM.

### Body

The body is fitted with a fabricated aluminium tray frame and roll-over protection frame. The specifications include a 2,000 litre nominal fabricated polypropylene water tank with baffles for surge protection, an electric start water-cooled Kubota D902 diesel powered GAAM Mk150 pump capable of delivering 450 lpm @ 700 kPa. The body has a roll-over protection bar, crew protection system including electrically activated crew protection sprays, cabin mounted radiant heat shielding curtains, a low level water warning alert system, dual pump controls plus pump start facility in cabin, permanently coupled suction hose, dead hose reel, drink cooler, double width stowage locker (nearside) and slide-out locker (offside).

The body can have several optional fitments at Brigade cost. The options as listed: Live hose reel (in lieu of dead hose reel), Class “A” ‘Quenchmaster’ foam system. The tanker is supplied fully stowed with the exception of drinking water and CFA map books.

### Visual Example



### Indicative Cost

Cab Chassis Costs Funding By Brigade & VESEP \$90,000

#### Funding Break up

Brigade Contribution \$30,000

Total Grant Contribution \$195,000

**Total Project Costs \$225,000**

Indicative price is at April 2021 (excludes GST)

Cost escalation to point of build in 2020/21 allow up to 10% increase



**BRIGADE OWNED VEHICLE BUILD-UP**  
**Light Tanker Crew Cab**  
**(VESEP 2021/22)**

**1. CAB CHASSIS (VESEP / Brigade Cost)**

**Cab Chassis and associated fitments/equipment – including modifications to conform to CFA's operational safety standards**

DESCRIPTION
1.1 <b>MY18 Isuzu NPS 75-155 4x4 Crew</b> (or equivalent) cab chassis incorporating a forward control five (5) person crew cabin
1.2 Cab chassis powered by a direct injection turbo charged diesel engine. (Maximum Power: DIN-Net – 114 kW @ 2,600 rpm. Maximum Torque: DIN-Net – 419 Nm @ 1,600-2,600 rpm) compliant with ADR 80/03 (Euro 5) Emission standards
1.3 Manufacturer's allowable G.V.M. 8,000kg ( <b>Upated</b> )
1.4 Front Axle capacity rating 3,100kg
1.5 Rear Axle capacity rating 6,000kg
1.6 Wheelbase 3,395mm
1.7 Turning circle 14 metres, kerb-to-kerb
1.8 Manual transmission with five (5) forward gears & one (1) reverse gear (with dual range transfer case), <u>or</u> Optional Automated Manual Transmission (AMT)
1.9 Limited slip differential fitted to the rear axle
1.10 Vacuum/hydraulic service brakes
1.11 Exhaust brake fitted with automatic disengagement whilst the vehicle is in "neutral"
1.12 Drum parking brake on transmission output shaft
1.13 Tyres – Steel-belted tubeless traction radial off road pattern
1.14 Fuel tank capacity 140 litres
1.15 Cabin Interior including manufacturer's standard fully integrated air-conditioning, driver and front outboard passenger air bags, electric windows and central locking with remote keyless entry and immobiliser
1.16 Seating incorporating: <ul style="list-style-type: none"> <li>• Driver's adjustable spring suspension seat suitable for off-road operation (non-standard)</li> <li>• Front passenger bench seat (with centre seat replaced by document stowage console)</li> <li>• Rear passenger bench seat fitted with three (3) lap-sash seat belts (non-standard)</li> </ul>
1.17 Heated and powered exterior main mirrors and independently adjustable convex "spot" mirrors
1.18 24V electrical system c/w 90 ampere alternator
1.19 Polished aluminium bull bar fitted with centrally mounted tow pin
1.20 Two (2) <b>Hella</b> fog lights fitted in bull bar
1.21 Approved metal case <b>Oblan</b> or <b>Donaldson</b> pre-cleaner fitted to the air intake tube
1.22 Vehicle's exhaust discharges horizontally to offside of vehicle
1.23 Steel encircling loops fitted around each driveshaft
1.24 All brake and fuel lines constructed from approved fire-resistant material
1.25 50 mm wide "Yellow" step rings fitted to front wheels
1.26 Metal exterior door handles and surrounds ( <i>non-standard</i> )
1.27 Crew cabin fitted with "B" Post stiffener ( <i>non-standard</i> )
1.28 Crew cabin fitted with electro-hydraulic cab tilt ( <i>non-standard</i> )
1.29 Red-painted cabin
1.30 Includes CFA Ergonomic Vehicle Design Guidelines (in its latest version) applied to equipment designs wherever practical
1.31 Compliance to Australian Design Rules (ADR's), relevant standards, regulations and Codes of Practice

## 2. **FIRE PUMP & PLUMBING** (VESEP Cost)

### Fire Pump Set and Associated Equipment

<b>DESCRIPTION</b>	
2.1	<b>GAAM Mk 150 / Kubota D902</b> (or equivalent) single-stage centrifugal fire pump close coupled to a water-cooled diesel engine with a minimum closed pump pressure of 1,150 kPa and a nominal flow rate of 450 litres/min. at 700 kPa – sufficient for two (2) 38mm lines or one (1) 64mm line with a 3 metre suction lift
2.2	Pump priming performed by a hand-operated diaphragm pump
2.3	Pump plumbing arrangement (All plumbing manufactured from stainless steel) <ul style="list-style-type: none"> <li>• Delivery manifold consisting of two (2) 38mm external lug coupling outlets and one (1) 65mm Storz outlet</li> <li>• <b>“Tank Fill Line Draughting”</b> plumbing originating from the delivery manifold</li> <li>• Front delivery plumbing consisting of nearside and offside under-tray 38mm external lug coupling outlets and three (3) 38mm external lug coupling outlets above -tray at front of body</li> <li>• Suction Manifold consisting of a separate permanently connected 8 metre x 75mm flexible suction hose, 65mm Storz <b>“Hydrant Boost”</b> inlet and 64mm water tank inlet</li> <li>• Separate 50mm water <b>“Tank Fill”</b> line fitted with a 65mm Storz coupling located on nearside of body</li> <li>• Front bull bar mounted tyre sprays plumbing originating from the nearside under-tray delivery plumbing c/w in-cabin mounted operating valve</li> <li>• Pump cooling (bleed) line including in-line strainer and check valve</li> </ul>
2.4	Pump engine fitted with 24V starter motor and controls (powered from cab chassis 24V battery)
2.5	Pump controls and instrument panel mounted on the nearside rear of the vehicle with duplicated controls mounted off the roll-over protection bar and pump start controls included in the cabin control panel
2.6	Pump engine fuel system integrated with the cab chassis diesel fuel system
2.7	Pump engine exhaust system discharges vertically at offside rear of body
2.8	Pump engine fitted with <b>Oblan C-021ES</b> combination air filter/pre-cleaner c/w flameproof air filter element
2.9	Includes CFA Ergonomic Vehicle Design Guidelines (in its latest version) applied to equipment designs wherever practical

### 3. **BODYWORK** (VESEP Cost)

#### Bodywork Build-up Arrangement

DESCRIPTION	
3.1	Aluminium tray frame
3.2	Tray frame fitted with aluminum chequer plate floor panels in the crew and walkway areas
3.3	Front of the tray frame fitted with an aluminium Roll-Over Protection Bar
3.4	Each side of the body fitted with a crew access step, access door and continuous handrailing
3.5	Crew Protection features, including: <ul style="list-style-type: none"> <li>• “Drop-down” radiant heat protection curtains fitted to cabin windscreen and side windows</li> <li>• Electrically actuated crew spray protection system sprays fitted to cabin, tyres, pump and rear pump control panel</li> <li>• Cabin rear window replaced with aluminium panel</li> <li>• Sides and rear of the body enclosed with aluminium heatshielding panels</li> <li>• Aluminium infill panels between the cabin and body</li> </ul>
3.6	Digital crew communication intercom system between cabin and deck area c/w flashing Magenta “ <b>Call Cabin</b> ” LED light in deck area
3.7	Top of the aluminium heatshielding panels on the offside and nearside front of the body fitted with safety yellow handrailing
3.8	Aluminium double-width stowage locker NS1 (including stowage brackets and listed stowage equipment) located on the nearside of the body
3.9	Aluminium blanket locker (including listed stowage items) located on top of NS1 accessible from the deck on the nearside of the body
3.10	Aluminium slide-out locker OS1 (including stowage brackets and listed stowage equipment) located on the offside of the body
3.11	Supply and fitment of stowage brackets and listed stowage equipment for the tray area
3.12	Reversing Camera and forward-facing deck camera (integrated with <b>Isuzu Digital Audio-Visual Entertainment Unit</b> in-cabin display)
3.13	2,000 litre ( <u>nominal</u> ) fabricated HDPE water tank complete with baffles and three (3) sight level gauges, centrally located on the tray frame
3.14	One (1) dead hose reel ( <b>Alternative: See Options – Item No. 5.1 for Live Hose Reel In lieu of Dead Hose Reel</b> )
3.15	Rear bumper bar complete with two (2) recovery eyes and combination LED rear tail lamps
3.16	Rear wheels fitted with aluminium mudguards
3.17	A two (2) battery roll-out battery carrier, complete with radiant heat shielding (on nearside)
3.18	<b>Intellitec Battery Guard</b> battery management system with Reset button located on cabin dash
3.19	Two (2) 24V jump-start/battery charger plugs (one located each side of body)
3.20	Two (2) red and blue LED mini light bars on cabin roof (blanked off to rear)
3.21	Four (4) red and blue LED hazard lights (2 at front and 2 at rear of appliance)
3.22	Alternate flashing headlight system
3.23	<b>Central Coast</b> Siren System
3.24	Low water level indication system
3.25	CFA mobile radio system c/w ignition relay and rear speaker
3.26	<b>GME XRS-370C</b> UHF CB radio
3.27	CFA portable radio charger (and CFA portable radio, if vehicle is additional to fleet)
3.28	Three (3) flexible arm-type LED map reading lights in cabin (one on dash and two in rear)
3.29	Stowage lockers illuminated with internal LED lighting
3.30	Tray access steps and under-tray plumbing illuminated with LED lighting
3.31	Crew area LED lighting installed in the walkway and pump bay areas of the body
3.32	Two (2) handheld LED spotlights with flexible cords: <ul style="list-style-type: none"> <li>• One (1) mounted at the offside of the vehicle off the water tank heat shield</li> <li>• One (1) mounted in the crew area with provision for mounting off either the left, or right-hand side of the roll-over protection bar and additional stowage brackets in crew area</li> </ul>

<b>DESCRIPTION</b>	
3.33	One (1) handheld halogen spotlight with flexible cord in cabin
3.34	One (1) CFA-approved 560mm (minimum length) LED driving light bar (on bullbar)
3.35	Two (2) small Green slow burn LED lights (mounted above vehicle front and rear registration plates, visible to "Road Safety" cameras)
3.36	CFA reflective Red/Yellow chequer striping, reflective yellow striping at rear and outline profile of body and cabin, CFA logos, " <b>FIRE</b> ", " <b>Emergency 000</b> " and " <b>Brigade Name</b> " decals and " <b>Aerial ID</b> " number
3.37	Engraved nameplates and decals
3.38	Stowage equipment supplied as per Section 4
3.39	Includes CFA Ergonomic Vehicle Design Guidelines (in its latest version) applied to equipment designs wherever practical
3.40	Compliance to Australian Design Rules (ADR's), relevant standards, regulations and Codes of Practice



#### 4. **STOWAGE** (VESEP / **Brigade Cost**)

CFA-approved Stowage equipment is supplied as follows:

Description	Contractor and/or CFA F&PE to Supply	CFA Brigade to Supply (see Note)
<b>Nearside Locker (NS1) (Double width)</b>		
1 x CFA First Aid Kit ( <i>CFA Part No. F2CFA</i> )	✓	
1 x Emergency "A" Class foam kit (If foam system optioned)	✓	
1 x Small Town Shut-off branch c/w 38mm external lug coupling	✓	
1 x <b>Quell TPB15-38mm</b> brass fog nozzle c/w 38mm external lug coupling	✓	
1 x 64mm x 3TPI female loose nut – 75mm Storz adaptor	✓	
1 x 65mm Storz – 75mm Storz adaptor	✓	
1 x 65mm Storz – 64mm x 3TPI male adaptor	✓	
1 x 65mm Storz to 38mm external lug adaptor ( <i>CFA Part No. ST6538ULC</i> )	✓	
2 x 65mm Storz spare bollards	✓	
2 x 64mm spare bollards	✓	
1 x 4.5kg ABE Dry Chemical Fire Extinguisher	✓	
2 x <b>"OneKey"</b> spanners ( <i>CFA Part No. SSONEKEY</i> )	✓	
1 x Combined live/dead hose reel handle	✓	
6 x 38mm external lug coupling washers	✓	
4 x 64mm x 3TPI female-coupling washers	✓	
2 x 65mm Storz coupling (delivery) washers	✓	
3 x 38mm spare bollards	✓	
1 x 10 metre x 64mm <b>Duraline</b> delivery hose c/w 65mm Storz couplings	✓	
1 x 15 metre x 38mm <b>Duraline</b> delivery hose c/w 38mm external lug couplings	✓	
3 x 30 metre x 38mm Duraline delivery hoses c/w 38mm external lug couplings (If dead hose reel fitted)	✓	
2 x 30 metre x 38mm <b>Duraline</b> delivery hoses c/w 38mm external lug couplings (If live hose reel optioned in lieu of Dead Hose Reel)	✓	
1 x <b>Stihl MS311 FarmBoss</b> chainsaw c/w 50cm bar and drip tray	✓	
1 x Chainsaw helmet ( <i>CFA Part No. HELMCS</i> )	✓	
1 x Earmuffs (pair) ( <i>CFA Part No. HELMCSEMUFF</i> )	✓	
1 x Visor ( <i>CFA Part No. HELMCSVISOR</i> )	✓	
1 x Chainsaw chaps - Medium (100cm) ( <i>CFA Part No. CHAPSCSM</i> )	✓	
1 x <b>Stihl 3/8"</b> chainsaw chain sharpening kit (to suit the <b>Stihl MS311</b> chainsaw)	✓	
1 x <b>Scepter 03615</b> combination chainsaw fuel (6 litre) and chain / bar oil (2.25 litre) canister c/w ( <i>CFA Part No. FUELSTROKE50</i> ) and ( <i>CFA Part No. FUELCHAIN</i> ) identification tags	✓	
1 x 5 litre fire lighter / drip torch metal fuel container c/w identification tag	✓	
1 x Plastic fuel funnel (to suit chainsaw and drip torch)	✓	
1 x CFA Hazardous Tree Kit	✓	
<b>Blanket Locker (On top of NS1)</b>		
3 x Crew protection blankets – 1.8m x 2m - Red ( <i>CFA Part No. BLANKET</i> )	✓	
<b>Offside Slide-Out Locker (OS1)</b>		
1 x Vehicle jack	✓	
1 x Jack handle	✓	
1 x Wheel nut spanner	✓	
1 x Spare wheel winch handle	✓	
1 x Toolbox c/w basic tool assortment	✓	
1 x Warning triangle set	✓	
1 x 20 metre x 12mm synthetic rope	✓	

Description	Contractor and/or CFA F&PE to Supply	CFA Brigade to Supply (see Note)
1 x Axe	✓	
1 x <b>Angus Fire Foamlite B65</b> Medium expansion Class "A" foam branch c/w 38mm external lug coupling <b>(If foam system optioned)</b>	✓	
1 x <b>Phoenix R200</b> Low expansion Class "A" foam branch c/w 38mm external lug coupling <b>(If foam system optioned)</b>	✓	
<b>On and Around the Crew Work Platform Area</b>		
1 x Handheld LED spotlight c/w flexible cord and plug (located on roll-over protection bar at front of body, transferrable between nearside and offside of deck)	✓	
1 x Handheld LED spotlight c/w flexible cord and plug (located on top of water tank at offside of deck)	✓	
1 x 4 litre " <b>Firebug</b> " fixed wand firelighter	✓	
1 x Tank strainer (in water tank fill point)	✓	
2 x 2.5 metre x 38mm <b>Duraline</b> delivery hoses c/w 38mm external lug couplings and 2 x <b>Quell TPB15-38mm</b> brass fog nozzles c/w 38mm external lug couplings	✓	
1 x 2.5 metre x 38mm <b>Duraline</b> delivery hose c/w 38mm external lug couplings and 1 x Small Town shut-off branch c/w 38mm external lug coupling and 12mm nozzle	✓	
1 x 20 metre x 25mm RED <b>Ortac</b> delivery hose c/w 38mm external lug couplings and 1 x <b>Quell TPB15-38mm</b> brass fog nozzle c/w 38mm external lug coupling (on live hose reel) <b>(If live hose reel optioned in lieu of Dead Hose Reel)</b>	✓	
<b>Below Tray</b>		
1 x 20 litre <b>Phoscheck WD881</b> Class 'A' foam drum ( <b>CFA Part No. FOAMAC20L</b> ) (on slide-out rack located offside) <b>(If foam system optioned)</b>	✓	
2 x Rake hoes ( <b>CFA Part No. RAKEHOEM</b> ) (located in nearside rear under-tray locker)	✓	
1 x CFA-approved aluminium long barrel service hydrant / standpipe c/w 65mm Storz couplings and 1 x blank cap with chain ( <b>CFA Part No. HYDALTWLST</b> ) (located in nearside rear under-tray locker)	✓	
1 x 25 litre drink cooler (located in nearside under-tray slide-out carrier)	✓	
600ml drink bottles (quantity to suit drink cooler)		✓
2 x Wheel chocks (one located on mudguard each side)		
<b>Suction Hose Locker</b>		
1 x 8 metre x 75mm (pre-connected) flexible suction hose c/w 75mm Storz couplings and 300mm long stainless-steel suction strainer with 75mm Storz coupling	✓	
1 x Suction hose float c/w chain and "D" shackle	✓	
1 x <b>Angus STRBASK75 (Hoenig)</b> stainless steel wire mesh basket strainer	✓	
<b>In the Cabin</b>		
5 x Crew protection blankets – 1.8m x 2m - Red ( <b>CFA Part No. BLANKET</b> )	✓	
1 x Handheld LED spotlight c/w flexible cord and plug	✓	
1 x Tanker Operating manual	✓	
1 x Quenchmaster Foam System operating manual <b>(If foam system optioned)</b>	✓	
1 x Cab Chassis Owner's Manual	✓	
1 x CFA Vehicle & Pump log book	✓	
1 x Pump/Engine Operating Manual	✓	
1 x CFA portable radio (either supplied by CFA after delivery if additional to fleet, or supplied by Brigade after delivery if a replacement appliance)	✓	✓

Description	Contractor and/or CFA F&PE to Supply	CFA Brigade to Supply (see Note)
1 x CFA Map book		✓
5 x Wildfire helmets		✓

**Note: Additional stowage items are not approved**

**5. OPTIONS (Brigade Cost)****Associated Fitments and Equipment**

Description	Estimated Brigade Cost (excl. GST) (Note 1)	Please (✓) if required
5.1 Live Hose Reel and delivery plumbing with 20 metres of 25mm Red <b>"ORTAC"</b> delivery hose (c/w 38mm external lug couplings) and one (1) <b>Quell TPB15-38mm</b> brass fog nozzle (c/w 38mm external lug coupling) tray mounted on the left-hand side rear of the vehicle <i>(in lieu of Item No. 3.13 – Dead Hose Reel)</i>	\$1,000	
5.2 Class "A" Foam - <b>GAAM Quenchmaster</b> Foam System (including one (1) 20 litre fresh water tank, one (1) foam drum rack, one (1) 20 litre drum of <b>Phoscheck WD881</b> Class "A" foam, one (1) foam kit and two (2) <b>Angus</b> foam expansion branches)	\$4,800	
<b>Total Brigade Cost</b>	<b>\$</b>	-

**Notes:**

1. Indicative cost as at April 2021 (excludes GST)

Summary Specification Prepared By:  
CFA Fleet & Protective Equipment

Issue 8  
23 March 2021

Signed by CFA Fire Brigade

\_\_\_\_\_  
(Brigade Representative)

Date: / /

Approval by District Headquarters

\_\_\_\_\_  
(Operations Manager)

Date: / /

## Overview

Each Medium Tanker project includes a cab chassis and body with a diesel powered pump. The body is mounted on a Hino GT 500 1528 or equivalent.

The body and cab chassis are to conform to CFA operational standards. The vehicle is licensed to carry five personnel including the driver and is designed primarily for a wildfire role.

## Cab Chassis

Hino GT 500 1528 cab chassis of 4WD (4x4) turbo charged diesel engine with six speed (5 forward & 1 reverse) automatic transmission and two speed transfer case (4x4). Incorporates five (5) person crew – two in the front and 3 in rear all fitted with lap/sash seatbelts. The cab is fitted with an internal “B” pillar intermediate support bar. Radiant heat protection curtains are fitted to all cabin windows and the vehicle is fitted with a spray protection system with switch activation from cabin and crew tray area.

## Body

- Polyethylene rota moulded water tank, 2,350 litres capacity including 650 litres of vehicle/crew spray protection water c/w baffle bones for surge protection.
- Fabricated steel/aluminium tray frame and external roll over protection bar.
- Class A Foam around-the pump proportioning system. Foam drum rack capacity; Two (2) x 20 litre carboys.
- 2 staged fire fighting pump with air-cooled diesel engine. Nominal output 900l/min @ 700kpa
- Water-cooled diesel driven Ultra High Pressure System (UHPS) (nom. 25 l/min @100 bar) connected to 1 x 12mm 60m electric rewind live hose reel mounted above tray OS rear and fitted with aspirating fog gun nozzle.
- 1 x electric bull bar mounted monitor fitted with adjustable nozzle (100-450 l/min) c/w in cabin joystick controller.
- Rear deliveries – 1 x 38mm external lug and 2 x 65mm Storz.
- 1 x electric rewind live hose reel c/w 20m of 25mm hose mounted above tray NS rear.
- Aluminium fabricated above tray lockering / stowage including multi function ladder and chainsaw
- Dead hose reel off side rear under tray
- Electric priming pump
- Tray mounted crew protection drop down awning
- BA Bracket (optional item at Brigade cost)



## Indicative Costs

Indicative price is at April 2021 (excludes GST)

Cost escalation to point of build in 2021/22 allow up to 10% increase

Additional Tanker	Funding	Replacement Tanker	Funding
Brigade Contribution	\$126,667	Brigade Contribution	\$ 58,333
Total Grant Contribution	\$253,333	Total Grant Contribution	\$321,667
<b>Total Project Cost</b>	<b>\$380,000</b>	<b>Total Project Cost</b>	<b>\$380,000</b>



## MEDIUM TANKER – 2021/22

### OVERALL SPECIFICATIONS

❑ GVM:	13T	❑ Overall Length:	7.35 m
❑ <b>Crew:</b>	<b>5</b>	❑ Overall Height:	3.0 m
❑ Operating Weight:	11.8T ( <i>with 5 crew</i> )	❑ Turning Circle:	17.0 m ( <i>nom.</i> )
		❑ Exit Angle:	24°

### CREW CAB CHASSIS (4x4)

- ❑ **Hino GT Series 500 1528 4x4** Crew Cab Chassis
- ❑ Engine – 206 kW (276 HP) turbo-charged, intercooled, 6 cylinder diesel engine
- ❑ Six (6) speed (5 forward & 1 reverse) automatic transmission
- ❑ Seating for five (5) crew – 2 in the front & 3 in the rear (*all seats fitted with lap/sash seatbelts*)
- ❑ 200L fuel tank
- ❑ 11R22.5” **Bridgestone M857** tubeless tyres
- ❑ Air conditioning, electric windows, fog lights, reversing camera
- ❑ Air over hydraulic braking system (*incl. ABS*)
- ❑ Aluminum bull bar & electric cab tilt
- ❑ Cabin internal support bar (*B post stiffener*)
- ❑ **Thermaguard SUPERHERM™** radiant heat protection curtains fitted to all cabin windows
- ❑ Vehicle/crew spray protection system (with 2 position switch activation – cabin and ROPS)

### FIREFIGHTING BODY and PLUMBING

- ❑ Polyethylene rota molded water tank – 2,350 litres capacity (including 650 litres for a vehicle/crew spray protection system) c/w baffle bones for surge protection.
- ❑ Fabricated steel/aluminum tray frame & external roll over protection bar
- ❑ 2 Staged **GAAM Mk 300D** pump/22kW **Hatz 2L41C** diesel engine (**Output: 900 l/min @ 700 kPa**)
- ❑ Electric priming pump
- ❑ Water cooled diesel driven Ultra High Pressure System (UHPS) (**nom. 25l/min @ 100 bar**) connected to 1 x Ø12mm 60m electric rewind hose reel fitted with aspirating fog gun nozzle.
  - Note:** UHPS nearside rear mounted on a slide out frame (*for maintenance access*)
  - UHPS fitted with stand alone inductive foam system
- ❑ Major plumbing including:
  - 1 x TFT electric bull bar mounted monitor fitted with adjustable nozzle (*nom. min. 100-450 l/min capacity*) c/w remote “in cabin” joystick controller
  - Rear deliveries - 1 x Ø38mm (*external lug*) and 2 x Ø65mm (*Storz*)
  - NS/OS forward below tray deliveries (*per side*) - 1 x Ø38mm (*external lug*)
  - 1 x electric rewind live hose reel c/w 20m Ø25mm hose (*mounted above tray NS rear*)
  - Rear below tray hydrant boost – 1 x Ø65mm (*Storz*)
  - Hard suction c/w permanently connected 9m of Ø75mm “wire whipped” suction hose fitted in NS rear undertray locker (*NS deployed*)
  - NS undertray Ø65mm tank fill (*Storz*)
- ❑ Vehicle control system including:
  - CANBUS multiplexing
  - Cabin forward console – pump & emergency response system control
  - Deck console – pump control
  - Rear console – pump controls and tank/pump indication
- ❑ ROPS mounted “Crew Protection Drop Down Awning” with **StormKing Mountain®** radiant heat protection curtain
- ❑ **Quenchmaster** CF700CFA inductive Class “A” foam system c/w slide-out drum rack for 2 x 20 litre Carboys (*OS undertray*) feeding all deliveries & monitors
  - Note:** UHPS Class “A” foam capable via dedicated inductive system
- ❑ Aluminium fabricated above tray lockering/stowage (*comparable to 2.4C*) including:
  - **NS1** - optional BA – gas strut top hinged
  - **NS2** - hose, adaptors, chainsaw – gas strut top hinged
  - **OS1** (slide out for pump bay maintenance access) - salvage gear
  - **NS Cabin/Body** – PPE/Miscellaneous gear
  - Capacity to stow 4 x Ø64mm & 5 x Ø38mm hose (*incl. dead hose reel*)
- ❑ **Little Giant** 10103 MT22 Multi-function ladder (*min. 5.8m extended length*) OS mounted between the cabin and body on a slide out frame
- ❑ Dead hose reel. (*OS rear undertray*)
- ❑ 20L fresh water tank
- ❑ NS undertray welfare locker c/w 25L removable esky





# Weight Loadings for Common Diesel 4x4 FCV's.

Vehicle	Gross Vehicle Mass (GVM)	Tare Weight (Standard Vehicle – No Accessories)		Available Payload	
Nissan Navara RX, 4WD Double Cab	2910 kgs	1892 kgs		1018 kgs	
Nissan Navara SL, 4WD, Double Cab	2910 kgs	Manual- 1928 kgs	Auto- 1934 kgs	Manual- 982 kgs	Auto- 976 kgs
Nissan Navara ST, 4WD , Double Cab	2910 kgs	Manual- 1947 kgs	Auto- 1953 kgs	Manual- 963 kgs	Auto- 957 kgs
Nissan Navara ST X, 4WD	2910 kgs	Manual- 1971 kgs	Auto- 1977 kgs	Manual- 939 kgs	Auto- 933 kgs
Nissan Navara RX, 4WD, Double cab, (Cab Chassis only)	2910 kgs	Manual- 1764 kgs	Auto- 1780 kgs	Manual- 1146 kgs	Auto- 1130 kgs
Toyota Prado GX, Manual/Auto (5-seater)- with rear door mounted tyre.	2990 kgs	Manual- 2230 kgs	Auto- 2240 kgs	Manual- 760 kgs	Auto- 750 kgs
Toyota Prado GXL, Manual/Auto- with rear door mounted tyre.	2990 kgs	Manual- 2315 kgs	Auto- 2325 kgs	Manual- 675 kgs	Auto- 665 kgs
Toyota Prado VX, Auto only- with rear door mounted tyre.	2990 kgs	2385 kgs		605 kgs	
Toyota Landcruiser LC200 GX, Auto	3350 kgs	2640 kgs		710 kgs	
Toyota Landcruiser LC200 GXL, VX, Auto	3350 kgs	2740 kgs		610 kgs	
Toyota Landcruiser LC70 Wagon Work Mate	3060 kgs	2275 kgs		785 kgs	
Toyota Landcruiser LC70 Wagon GXL	3060 kgs	2265 kgs		795 kgs	
Toyota Landcruiser LC70 Double Cab Work Mate (Cab Chassis only)	3300 kgs	2190 kgs		1110 kgs	
Toyota Landcruiser LC70 Double Cab GXL (Cab Chassis only)	3300 kgs	2175 kgs		1125 kgs	
Toyota Hilux Work Mate, Double Cab, Manual/Auto	3000 kgs	Manual- 2045 kgs	Auto- 2045 kgs	Manual- 955 kgs	Auto- 955 kgs
Toyota Hilux SR, Double Cab, Manual/Auto	3000 kgs	Manual- 2050 kgs	Auto- 2045 kgs	Manual- 950 kgs	Auto- 955 kgs
Toyota Hilux SR 5, Double Cab, Manual/Auto	3000 kgs	Manual- 2040 kgs	Auto- 2045 kgs	Manual- 960 kgs	Auto- 955 kgs
Toyota Hilux Work Mate, Double Cab, Auto, (Cab Chassis only)	3000 kgs	1950 kgs		1050 kgs	
Toyota Hilux SR, Double Cab, Manual/Auto, (Cab Chassis only)	3000 kgs	Manual- 1955 kgs	Auto- 1955 kgs	1045 kgs	
Holden Colorado LS, Double Cab, Manual/Auto	3150 kgs	Manual- 2072 kgs	Auto- 2065 kgs	Manual – 1078 kgs	Auto- 1085 kgs
Holden Colorado LTZ, Double Cab, Manual/Auto	3150 kgs	Manual- 2144 kgs	Auto- 2137 kgs	Manual – 1006 kgs	Auto- 1013 kgs
Holden Colorado LTZ, Double Cab, Auto only (Cab Chassis only)	3150 kgs	2163 kg		987kgs	
Holden Colorado LS, Double Cab, Manual/Auto (Cab Chassis only)	3150 kgs	Manual- 1927 kgs	Auto- 1920 kgs	Manual – 1223 kgs	Auto- 1230 kgs
Ford Ranger XLS, Double Cab, 3.2L, Manual/Auto	3200 kgs	Manual- 2191 kgs	Auto- 2209 kgs	Manual- 1009 kgs	Auto- 991 kgs
Ford Ranger XLT, Double Cab, 3.2L, Manual/Auto	3200 kgs	Manual- 2212 kgs	Auto- 2230 kgs	Manual- 988 kgs	Auto- 970 kgs
Ford Ranger XL, Double Cab, 3.2L, Manual/Auto (Cab Chassis only)	3200 kgs	Manual- 1995 kgs	Auto- 2012 kgs	Manual- 1205 kgs	Auto-1188 kgs
Mitsubishi Triton GLX, Double Cab, Manual only (Cab Chassis only)	2900 kgs	1805 kgs		1095 kgs	
Mitsubishi Triton GLX, Double Cab, Manual/Auto	2900 kgs	Manual- 1950 kgs	Auto- 1955 kgs	Manual- 950 kgs	Auto- 945 kgs
Mitsubishi Triton GLX-R, Double Cab, Manual/Auto	2900 kgs	Manual- 1961 kgs	Auto- 1966 kgs	Manual- 939 kgs	Auto- 934 kgs
Mitsubishi Pajero GLX Manual / Auto	3030 kgs	2302 kgs		728 kgs	
Mitsubishi Pajero GLS Manual / Auto	3030 kgs	2319 kgs		711 kgs	

\*\*\*Toyota Hilux data is not current- no current data available. \*\*\*\*



# Weight Loadings for Common Diesel 4x4 FCV's.

Vehicle	Gross Vehicle Mass (GVM)	Tare Weight (Standard Vehicle – No Accessories)		Available Payload	
Mazda BT 50 XT, Double Cab, 3.2L Manual/Auto	3200 kgs	Manual- 2020 kgs	Auto- 2036 kgs	Manual- 1180 kgs	Auto- 1164kgs
Mazda BT 50 XTR, Double Cab, 3.2L Manual/Auto	3200 kgs	Manual- 2091 kgs	Auto- 2105 kgs	Manual- 1109 kgs	Auto- 1095 kgs
Mazda BT 50 GT, Double Cab, 3.2L Manual/Auto	3200 kgs	Manual- 2147 kgs	Auto- 2161 kgs	Manual- 1053 kgs	Auto- 1039 kgs
Mazda BT 50 XT, Double Cab, 3.2L, Manual (Cab Chassis only)	3200 kgs	Manual- 1932 kgs	Auto- 1946 kgs	Manual- 1268 kgs	Auto- 1254 kgs
VW Amarok Core, Dual Cab, Auto, V6	3080 kgs	2091 kgs		989 kgs	
VW Amarok V6 Sportline, Dual Cab, Auto	3080 kgs	2104 kgs		976 kgs	
VW Amarok V6 Highline, Dual Cab, Auto	3080 kgs	2174 kgs		906 kgs	
VW Amarok V6 Ultimate, Dual Cab, Auto	3080 kgs	2244 kgs		836 kgs	
Isuzu D-Max, LS-T, Double Cab, Auto	3050 kgs	2026 kgs		1024 kgs	
Isuzu D-Max LS-U, Double Cab Manual/Auto	3050 kgs	2021 kgs		1029 kgs	
Isuzu D-Max, LS-M, Double Cab, Manual/Auto	3050 kgs	2001 kgs		1049 kgs	
Isuzu D-Max,SX, Double Cab, Manual/Auto	3050 kgs	2016 kgs		1034 kgs	
Isuzu D-Max SX, Double Cab Manual/Auto (Cab Chassis only)	3050 kgs	Manual- 1886 kgs	Auto- 1891 kgs	Manual- 1164kgs	Auto- 1159 kgs

### Definition & Requirements of a Field Command Vehicle

A four wheel drive off road vehicle of an appropriate size to operate in the bush. An FCV would be used in a range of incident management roles including; incident control in a level 1 fire, Operations Officer, Sector Commander, Strike Team Leader, Ground Observer or Staging Area activities for level 2 or 3 incidents.

An FCV is to be built to the following specifications:

- Wagon or twin cab conventional vehicle diesel with snorkel intake
- Must be licensed to carry 4 or 5 people
- Standard Light Bar, Grill lights & siren (funded separately)
- Two CFA radios, portable and one UHF radio (funded separately)
- Standard CFA Livery (funded separately)

### Other Information

- All applications must be supported by a GVM weight pro forma as GVM upgrades will not be considered for any FCV vehicle.
- Brigades/Groups to supply VESEP Project Coordinator quotes in accordance with Victorian Government procurement guidelines for all components of the project. Coordination required between Brigade/Group and suppliers.
- Additional items will require District approval and be included within weight calculations

The GVM weight pro forma is available on Brigades on Line:- Brigade / Property & Equipment / Brigade owned vehicle / Equipment information. GVM upgrades are not permitted on any FCV.

For replacement vehicles previously funded through the program the \$2 : \$1 funding formulae will now only be applied to the net change over value (ie: cost less trade in value)



### Grant Formula

Equipment grants are funded by VESEP & Brigade, \$2 VESEP to \$1 Brigade with a maximum VESEP contribution of \$150,000.

### Definition & Requirements of a Field Command Vehicle

#### Overview

- A FCV is a four wheel drive off road vehicle of an appropriate size to operate in the bush.
- The FCV delivers enhanced incident management capability and ergonomic features. This vehicle is licensed to carry 5 people including the driver.
- The vehicle has a six speed automatic transmission and does not require an endorsed license to drive.
- The FCV is used in a range of incident management roles including; incident control in a level 1 fire, Operations Officer, Sector Commander, Strike Team Leader, Ground Observer or Staging Area activities for level 2 or 3 incidents.

#### Cab Chassis – Ford Ranger XL 4x4 Utility (White)

- Five Star ANCAP Rating
- 3.2l Turbo Charged Diesel Engine
- 6 Speed automatic Transmission
- Dual batteries, and reversing alarm
- Nudge bar or bulbar , snorkel and tinted windows
- Bluetooth
- AUX/USB/iPod integration
- Cruise control with steering wheel mounted buttons
- eLocking Rear Differential
- Dynamic Stability Control (DSC)
- Emergency Brake Assist
- Rubber dish style floor mats
- Heavy Duty canvas seat covers
- Side Steps (in lieu of bulbar)
- Towbar with flat pin wiring plug
- All-terrain tyres
- Two CFA Tait radios
- Driving Light Bar (RF Comms Safe Compatible)
- Reverse Camera
- GVM 3200kg
- Pre-Collision Assist (AEB with Pedestrian Detection)
- Lane Keeping Aid with Driver Alert System
- Automatic High Beam
- A genuine Ford bulbar can be provided in lieu of side steps



### Emergency Warning Systems & Livery

(These items are funded separately)

- Light Bar Multi Colour 360 Degree Red/Blue Alternating.
- Grill lights Multi Colour Red/Blue Alternating
- Siren System 100w with siren/lights integrated controller
- Standard CFA Livery
- Flashing headlights

### Body

- Purpose built powder coated service body with lift up doors. Transferable between cab chassis.
- Full aluminium construction
- Roll out under tray rear drawer
- Rubber matting
- Tie down points
- 12 to 240v Invertor
- Under tray lockers
- LED internal locker lights main compartment
- LED work lights
- 4.5kg AB dry chemical extinguisher
- One Tait Portable Radio Charger
- Six USB charging points (4 inside cabin, 2 inside body)
- Central locking of all above tray locker doors wired to Ford remote
- Adjustable shelves
- Fire protection for cab chassis electrical wiring looms
- ENGEL Fridge
- Fridge Tilt/ Slide bracket.
- VASS Certification
- One UHF radio (GME)
- Rear seat map light
- Whiteboards





### Body Layout





### Other Information

- These vehicles are fully project managed by CFA Headquarters and delivered to the local District Office when completed. This vehicle is a standard design therefore additional items or design changes will not be accommodated.
- There will be no requirement for Brigades/Groups to obtain specific quotes for any components.
- GVM upgrades will not be considered for any FCV vehicle.
- Light bar, siren, livery and radios are funded separately and do not require a brigade contribution.
- All additional items to be stowed will require District approval and not cause the GVM of the FCV to be exceeded
  - be exceeded
- For replacement vehicles previously funded through the CSESP or VESEP program the \$2 : \$1 funding formulae will be applied to the net change over value (ie: cost less sale value exc GST). The existing CSESP/VESEP FCV vehicle to be disposed of by the Brigade/Group. See example below.

### Grant Formula

Equipment grants are funded by VESEP & Brigade, \$2 VESEP to \$1 Brigade with a maximum VESEP contribution of \$150,000.

### Indicative Costs - exc GST

Brigade Contribution	\$28,333
Grant Contribution	\$56,667
<b>Total Project Costs</b>	<b>\$85,000</b>

### Example of previously funded CSESP/VESEP vehicle formula.

Total Project Cost	\$85,000
Less estimated sale price	\$20,000
<b>Total Project Application</b>	<b>\$65,000</b>

Brigade Contribution	\$21,667 + estimated sale value of existing FCV
Grant Contribution Maximum	\$43,333

Indicative prices as of April 21 (excludes GST)

Cost escalation to point of build in 2021/22 up to 10% increase

### Overview

The trailer pump has a tandem axle, equipped with a water cooled diesel engine with a nominal pump output of 2,000 L/min @700 kPa. Primarily utilised for water fill points on the fire ground however can also be connected to a hydrant, if necessary.

### Trailer

- Fabricated galvanized steel/aluminum chequer plate tray frame and drawbar
- Tandem axle c/w mechanical override, hydraulic operated, drum brakes
- Jockey wheel, lockable tow coupling and 7 pin electrical connection
- Retractable rear end stabilizers
- 15" Light Truck tyres fitted to Sunraysia rims including spare
- Aggregated Trailer Mass (ATM) : 1.6 Tonne

### Pump and Plumbing

- Water pump coupled to a 38kW water cooled diesel engine c/w noise suppression cowling
- 60L diesel fuel tank
- Electric priming pump
- 2 x Ø65mm Storz deliveries (near side)
- 9m Ø100mm pre connected suction hose fitted to the rear located in a dedicated locker behind tailgate

### Electrical

- 4m extendable hand operated pneumatic light mast c/w 4 x LED lights
- Green "water point" LED strobe (mounted on top of light mast)
- NS control panel incorporating pump controls, gauges, warning lights and light switching
- Single battery and pre connected 240v trickle charging system

### Stowage

- Red painted aluminum fabricated lockering c/w gas strut assisted "hinge up" doors and LED lockering

<b>Nearside 1 locker</b>	<b>Offside 1 locker</b>
Hose (4x65mm-15m, 2x65mm-30m, 1x38mm-15m)	3m x 3m CFA water point marquee
Miscellaneous adaptors	2 x folding chairs
	Miscellaneous tools and first aid kit
<b>General Tray</b>	
4.5kg ABEdry chemical extinguisher	<b>Offside 2 Locker</b>
10L diesel fuel container	2 Eskies
Shovel, aluminium hydrant, 2 x traffic cones, rakehoe	Personal Gear
Mussel c/w 100 mm Storz	
	<b>Forward Wheel Arch Lockers x (2)</b>
	Wheel chocks, jack and wheel brace
	Stabiliser pads
	Miscellaneous





### Indicative Cost

Brigade Contribution	\$23,333
Total Grant Contribution	\$46,667
<b>Total Project Costs</b>	<b>\$70,000</b>

Indicative price is at April 2021 (excludes GST)  
Cost escalation to point of build in 2020/21 allow up to 10% increase

It is important to note that GST is not factored into the total project costs, therefore the GST exclusive amount should be used to calculate the Brigade and VESEP contribution

### Grant Formula

Equipment grants are funded by VESEP & Brigade, \$2 VESEP to \$1 Brigade with a maximum VESEP contribution of \$150,000



### Overview

The trailer pump has a single axle, equipped with a water cooled diesel engine with a nominal pump output of 2,000 L/min @700 kPa. Primarily utilised for water fill points on the fire ground however can also be connected to a hydrant, if necessary.

### Trailer

- Fabricated galvanized steel/aluminum chequer plate tray frame and drawbar
- Single axle c/w mechanical override, hydraulic operated, drum brakes
- Jockey wheel, lockable tow coupling and 7 pin flat electrical connection
- Retractable rear end stabilizers
- 15" Light Truck tyres fitted to Sunraysia rims including spare
- Aggregated Trailer Mass (ATM) : 1.2 Tonne

### Pump and Plumbing

- Water pump coupled to a 38kW water cooled diesel engine c/w noise suppression cowling
- 60L diesel fuel tank
- Electric priming pump
- 2 x Ø65mm Storz deliveries (near side)
- 9m Ø100mm pre connected suction hose fitted to the rear located in a dedicated locker behind tailgate

### Electrical

- 4m extendable hand operated pneumatic light mast c/w 4 x LED lights
- Green "water point" LED strobe (mounted on top of light mast)
- NS control panel incorporating pump controls, gauges, warning lights and light switching
- Single battery and pre connected 240v trickle charging system

### Stowage

- Red painted aluminum fabricated lockering c/w gas strut assisted "hinge up" doors and LED lockering

Nearside 1 locker	Offside 1 locker
Hose (2xØ65mm-15m, 1xØ38mm-15m)	Esky
Miscellaneous adaptors	First aid kit
General Tray	Forward Wheel Arch Lockers x (2)
4.5kg ABE dry chemical extinguisher	Wheel chocks, jack and wheel brace
10L diesel fuel container	Stabiliser pads
Shovel, rakehoe, 2 x traffic cones	Miscellaneous
Mussel c/w Ø100 mm Storz	



### Indicative Cost

Brigade Contribution	\$19,167
Total Grant Contribution	\$38,333
<b>Total Project Costs</b>	<b>\$57,500</b>

Indicative price is at April 2021 (excludes GST)  
 Cost escalation to point of build in 2021/22 allow up to 10% increase

It is important to note that GST is not factored into the total project costs, therefore the GST exclusive amount should be used to calculate the Brigade and VESEP contribution

### Grant Formula

Equipment grants are funded by VESEP & Brigade, \$2 VESEP to \$1 Brigade with a maximum VESEP contribution of \$150,000.



# **COUNTRY FIRE AUTHORITY**

## **TECHNICAL SPECIFICATION**

### **GENERAL PURPOSE TRAILER**

**(Single or Tandem Axle)**

**Maximum 2,000 kg ATM**

**January 2017**

**CFA TECHNICAL ASSET STRATEGY & SERVICES**



## 1. General

- 1.1 This specification covers standard “heavy duty” single or tandem axle box style trailers up to 2,000kg ATM, ranging in typical size from 6’x4’ to 10’x5’.
- 1.2 The trailer will be used by CFA for a range of purposes. The design and construction must be suitable for potential outdoor storage for a minimum 20 year life and exposure to hot and dirty environments. It must be suitable for direct exposure to water.
- 1.3 Trailer shall be suitable for towing by a conventional 2WD or 4WD vehicle with a minimum unbraked towing capacity not less than 2,000kg or braked capacity of 750 kg.
- 1.4 **Aggregate Trailer Mass (ATM)** - is the total mass of the trailer when carrying the maximum load. This includes mass imposed onto the towing vehicle when the combination vehicle is resting on a horizontal supporting plane.
- 1.5 **Gross Trailer Mass (GTM)** - is the mass transmitted to the ground by the tyres of the trailer when coupled to a towing vehicle and carrying the maximum load, approximately uniformly distributed over the load bearing area.
- 1.6 **Payload** – is the trailer’s carrying capacity. It is the difference between the Tare Weight (un-laden weight) and the **ATM**.
- 1.7 In addition to full compliance to the relevant Sections of this Specification, the trailer **must** comply with all:
  - a) Relevant State and Federal Statutory Regulations
  - b) Standards and rules that are called upon by any applicable Act or Regulation including, but not limited to, Australian Design Rules (**ADR**’s) and Australian Standards.
  - c) Victorian Occupational Health and safety (OH&S) Plant Regulations and Code of Practice (No.19, 1 July 1995).
- 1.8 The trailer shall be within trailer and tyre manufacturer’s ratings when fully laden to maximum operating weight and shall possess stable towing, braking and stand-alone characteristics when fully loaded to the **ATM**.
- 1.9 CFA acceptance is subject to final inspection and fault rectification.
- 1.10 Payment Terms:
  - 100% Payment (including registration and on-road costs) on CFA acceptance and delivery of the trailer to the designated CFA site.
- 1.11 Minimum 4 years warranty on all parts and labour. Lesser OEM warranty shall be identified.

## 2. Trailer

- 2.1 Single or tandem axle trailer (commercially available or customised) of Category TA (*very light trailer - single axle with GTM less than or equal to 750kg*) or TB (*light trailer – with GTM greater than 750kg but less than or equal to 2,000kg*) – refer Table 1
- 2.2 Conforms with the requirements of **National Code of Practice, Building Small Trailers, Vehicle Standards Bulletin 1 (VSB1)**
- 2.3 Materials of construction:

Heavy duty sub-frame and draw bar	Fully hot-dipped galvanised steel
Tray flooring	Galvanised steel chequer plate
Sides and front (nom. 300mm high)	Painted steel sheeting overlaid on a galvanised steel framing – painted RED in accordance with Clause 5.2
Mudguards/gusseting	Min 2.5mm Aluminum chequer plate
Tailgate	Min 2.5mm Aluminum chequer plate overlaid on a galvanised steel framing

- 2.4 Mudguards to be fitted with rubberized mudflaps (as required) to comply with rearward projection requirements of ADR42.
- 2.5 The rear tailgate shall be “drop down” 180<sup>o</sup> hinged c/w 2 x Ø5mm galvanised steel



retaining chains and “quick release spring loaded clip. The tailgate shall be secured in the closed position by 2 x anti-luce latches min M10 (galvanized or stainless steel).

Note: screw/bolt on style latches shall be retained in place by a suitably sized nyloc nut.

- 2.6 “Off-Road” mechanical override type 50mm diameter lockable “quick release” ball towing coupling c/w handbrake (if braked) in accordance with AS4177.2 – refer Table 1.
- 2.7 Heavy duty axle(s) c/w mechanical override hydraulic assist operated disc brake – refer Table 1.  
 Note: disc brake operating on the rear in the case of a tandem axle trailer  
 Note: electric braking is not to be offered.
- 2.8 Preferred multi-leaf spring suspension – refer Table 1.
- 2.9 15” **Sunraysia** white painted steel rims (incl. spare) fitted with new Light Truck (LT) tyres with a speed category symbol not less than “L” (120km/h maximum).
- 2.10 Spare wheel horizontally mounted on the drawbar.
- 2.11 2 x load rated galvanised steel drawbar safety chains and “D” shackles in accordance with ADR62/02 and AS4177.4 mounted one on either side of the centreline of the draw bar as close as practical to the tow coupling.
- 2.12 1,000kg (nom) heavy duty wind-down rear stabilisers (x2) – one in each rear corner.
- 2.13 Heavy duty quick acting “swing-up” 200mm diameter solid rubber jockey wheel.
- 2.14 A 12Vdc 7 pin flat trailer plug fix mounted on the forward portion of the drawbar in accordance with AS4177.5.
- 2.15 Multi-voltage LED combination Stop/Tail/Indicator and Registration (Number) plate lights.
- 2.16 Amber reflex reflectors (**Hella** Part No. 2922) on both sides of the bodywork (outer edge of the mudguards not on the tailgate). in accordance with ADR requirements.
- 2.17 Rear mounted registration plate holder.

Trailer Type	Category	Coupling	Brakes	Suspension
Basic	TA <750kg GTM	50mm Standard	No	Spring
	TB >750kg GTM	50mm Override	Yes	Spring
Off-Road	TA <750kg GTM	50mm Off-Road	No	Spring
	TB >750kg GTM	50mm Off-Road Override	Yes	Spring

**Table 1**

**3. Finishes (General)**

- 3.1 Materials used in the construction combine lightness, strength and durability.
- 3.2 Hot-dip galvanised steel components in accordance with AS/NZS 4680 (450 g/m<sup>2</sup>) before assembly, with any rework (e.g. drilling, cutting, welding, grinding, etc.) treated with cold galvanising paint (or suitable equivalent).
- 3.3 All fasteners (including nuts, bolts, washers, etc.) - 316 stainless steel. Minimum over-length hex head bolts preferred.
- 3.4 Spring washers or nyloc nuts fitted to prevent loosening.
- 3.5 All steel and aluminium welding to comply with AS/NZS 1554 Part-1 and AS/NZS 1665, respectively.
- 3.6 All sharp edges shall be de-burred and corners radiused.
- 3.7 Wiring protrusions through metal shall be protected against rubbing (e.g. pinchweld or sacrificial sleeving).

**4. Electrical (general)**

- 4.1 All wiring colour coded or numbered and protected within tape stitch sealed (nom. 300mm spacing) split-conduit/ducting generally run behind metal paneling wherever possible, or neatly “p- clamped”.



- 4.2 All wiring connectors shall be waterproof DEUTSCH DT series connectors.
- 4.3 All exposed terminals protected with water proofing terminal spray (**Worth** silicon spray grease or equivalent).
- 4.4 All electrical equipment to be sourced from reputable suppliers (e.g. **Hella**, **Narva** or **Clipsal**) and be readily available within Victoria for on going maintenance and spares support.

## 5. Livery and Decals

- 5.1 Decals/labelling shall be 1.5mm thick engraved laminated PVC c/w WHITE lettering on BLACK background fastened using double-sided permanent glue tape.
- 5.2 Where specified surfaces shall be primed and painted with a min. two (2) coats of 2 pak polyurethane lead free paint.
  - Post Office RED, PPG 426/07342 (or equivalent)
  - Nominal 50-100 µm thickness.
  - To a medium to high specular gloss finish with a minimum 60 Gloss Units (GU) @ 20 degrees reflectance angle.
- 5.3 3 x “**CFA**” logos – one on each side (rearward portion) and one at rear (centrally located) – positions to be determined by CFA.
- 5.4 2 x “**EMERGENCY 000**” decal – one on each side (rearward portion) – positions to be determined by CFA.
- 5.5 **Tyre Inflation Pressure** decals (engraved WHITE writing on BLACK background) above each wheel, showing recommended tyre pressures in kPa.
- 5.6 **Unladen mass** and **maximum payload** decals located on the drawbar.
- 5.7 Two (2) “**GTM**” decals, 50mm high RED font; one (1) each side of trailer drawbar.
- 5.8 25mm yellow reflective diamond grade striping fitted to:
  - Outer face of the stabilisers (x2)
  - Outlining the sides and front/rear

## 6. Registration, Trailer Identification and Delivery

- 6.1 Registered to CFA (PO Box 701 Mt Waverley, Vic. 3149) on Victorian “Blue” trailer plates, with “**Common Expiry Date**” of **15 August**. Pricing inclusive of all on-road costs (registration fees, stamp duty and insurances [as applicable]).
- 6.2 Non-corrosive metal vehicle plate permanently affixed by stainless steel rivets with information in accordance with Clause 7 of VSB1.
- 6.3 Registration plate c/w ADR approved LED light mounted on the rear taligate
- 6.4 Delivery to CFA designated location within the state of Victoria.



# VESEP 2021/22

## Personal Protective Clothing

### Chainsaw Operations





#### Overview

CFA has introduced a new standard for Personal Protective Clothing whilst undertaking operational activities using a chainsaw. The new standard includes an outer layer of fire resistant material (Proban) on the chaps and a new helmet specification (AS/NZS 1801 Type 3).

These items are available through the CFA State Logistics Centre

#### Details

Product		Cost Exc GST
<p>Stihl Government &amp; Utility Proban covered chainsaw chaps high visibility orange</p> <p><i>SLC Product Codes</i></p> <p>CHAPSCS Available in short, medium &amp; long lengths</p>		<p>\$228.00</p>
<p>Professional Safety Helmet (supplied with visor and ear muffs)</p> <ul style="list-style-type: none"> <li>• <i>Helmet includes CFA logo</i></li> </ul> <p><i>SLC Product Codes</i></p> <ul style="list-style-type: none"> <li>• HELMCS - Helmet</li> <li>• HELMCSEMUFF - Ear Muffs</li> <li>• HELMCSVISOR - Visor</li> </ul>		<p>\$95.00</p>

#### Indicative Cost

Funding Breakup

Brigade Contribution \$ 108.00  
 Grant Contribution \$ 215.00

**Total Project \$ 323.00**

Pricing – Indicative @ May 2020

The Pelican 9430 Remote Area Lighting System (RALs) is an approved CFA product.

### Details

- Up to 15 hours of burn time
- 3000 Lumens of brightness
- Fully extendable mast with 360 degree rotating head
- Low Battery Warning system
- Waterproof Rubber Activation Switch
- Mast Extension Lock
- Maintenance Free LED Array with 50,000 hours of life expectancy



### Pricing – Indicative @ April 2021

Costs for the unit are approximately \$1,620

### GST

It is important to note that GST is not factored into the total project costs, therefore the GST exclusive amount should be used to calculate the Brigade and VESEP contribution

### Grant Formula

Equipment grants are funded by VESEP & Brigade, \$2 VESEP to \$1 Brigade with a maximum VESEP contribution of \$150,000.



The Side x Side vehicle is used to assist with fuel reduction burns as an efficient and safe method of lighting. It can also be used for herbicide spraying. A rear tilt tray provides flexibility making the vehicle suitable for a variety of roles at staging areas, technical rescue, etc.

### Vehicle

The two seater, four wheel all-terrain vehicle travels on low pressure tyres and can operate in 2 or 4 wheel drive mode. It is fitted with a ROPS certified roll frame.

- 800cc (approx.) in line, water cooled Diesel
- Constant variable transmission, 2WD/4WD
- Front and rear differential lock
- Ground clearance 280mm or above
- Dimensions (approx.) L 3018mm, W 1520mm, H 1905mm
- Weight approx. 700kg

*\*NOTE: a base frame will be fabricated in the tray for mount the burner unit / spray unit*

### Features

- Electronic Power Steering
- Windscreen
- Roof Kit

### Safety features include

- Lap sash seatbelts
- Head rests

### Trailer

11' x 6' Heavy Duty Tandem Trailer

- Chequer plate floor
- 65 x 35 RHS chassis
- 40 x 40 RHS cross members
- 75 x 50 RHS drawbar
- 15" deep chequer plate sides
- 40mm square duraflex axles
- 5 leaf x 60mm roller rocker springs
- 9" hydraulic override brakes on front axle
- Full width gas spring assisted ramp
- Tie down points with individual wheel load restraint straps
- Full length braced tie rails each side
- Spare wheel
- Multi volt LED lights
- 8" quick release jockey wheel
- Hot Dip Galvanising
- ADR to 2000kg gross

*\*NOTE: trailer construction specification may vary*



### Side x Side Equipment

- AS/NZS 2906-2001 compliant 25lt burn fuel container with drip torch
- Red/blue warning lights front and rear facing
- GME 80 channel UHF radio
- Ground "earthing" cable for attachment to refueling container / tank attached
- First Aid Kit
- 1.5kg Dry powder fire extinguisher
- Helmet brackets (x2)



**Optional Extra:** 300lt herbicide container with spray attachment and 12v power point wired in vehicle



### Indicative Cost

Brigade Contribution	\$14,167
Total Grant Contribution	\$28,333

**Total Project Costs excluding options \$42,500**

**Options : 300lt herbicide container with spray attachment including 12V power point \$ 2,100**

Indicative price is at April 2021 (excludes GST)

Cost escalation to point of build in 2021/22 allow up to 10% increase

It is important to note that GST is not factored into the total project costs, therefore the GST exclusive amount should be used to calculate the Brigade and VESEP contribution

### Grant Formula

Equipment grants are funded by VESEP & Brigade, \$2 VESEP to \$1 Brigade with a maximum VESEP contribution of \$150,000.

The CFA has two approved Thermal Imaging Camera suppliers and models

### Model: - Draeger UCF 9000

Features a 90mm high definition screen and will operate in a temperature range of -40 to 1000 degrees Celsius

The package includes:-

- 2 x batteries,
- Hard carry case
- 240V charger
- in vehicle charger
- Retractable lanyard

**Pricing @ April 2021 - \$10,212 exc GST**

**Brigade Contribution \$ 3404**

**VESEP Contribution \$ 6808**



### Model: - 3M Scott V320

Features a 90mm screen size and will operate in a temperature range of -20 to 650 degrees Celsius.

The package includes:-

- 2 x batteries
- Hard carry case
- 240V charger
- Retractable lanyard

**Pricing @ April 2020 - \$3014 exc GST**

**Brigade Contribution \$ 1005**

**VESEP Contribution \$ 2009**



### Grant Formula

Equipment grants are funded by VESEP & Brigade, \$2 VESEP to \$1 Brigade with a maximum VESEP contribution of \$150,000.

## Overview

The Big Fill incorporates an aluminium body and a new water-cooled diesel engine powered pump on a new Toyota LandCruiser cab chassis. These vehicles will be licensed to carry 2 people including the driver. The body and cab chassis conform to CFA operational safety standards.

## Cab Chassis – Toyota LandCruiser

Toyota LandCruiser 70 Series Workmate 4x4 MY20 cab chassis, turbo-diesel, manual, front wheel flares and GVM upgrade to 3,950kg. Fitted with alloy bull bar, bonnet protector, reversing camera, headlight protectors, 3,500kg towbar, tow ball, towbar wiring, floor mats, air conditioning, intercooler guard, steering guard and engine air intake heat shield, 16" x 7" alloy rims, all-terrain tyres, registration and on-road costs.

## Big Fill Body

- Aluminium tray and lockers
- Decals, emergency lights, sirens, radios, scene lights, spot light, reversing beeper, reversing camera and green "Quickfill" lights
- Water-cooled diesel engine powered centrifugal pump
- Pelican remote area lighting system c/w tripod and in-vehicle charger
- (4x) 2.4m clear "Heliflex" suction hoses, suction strainer, Hoenig wire basket, float and rope
- (2x) 100mm/65mm Storz spanners
- (4x) 30m x 64mm delivery hoses
- (2x) 15m x 64m delivery hoses
- (2x) 30m x 38mm delivery hoses
- Aluminium service hydrant
- Selection of hose adaptors
- (2x) Witches hats
- (2x) Rake hoes
- (2x) Portable Green flashing lights
- Tow strap
- Shovel and axe
- First aid kit
- (2x) Woollen fire blankets
- Drinking water cooler
- Tool box (c/w pliers, adjustable spanner, screwdrivers)
- 4.5kg AB dry chemical fire extinguisher & bracket
- Provision for limited Brigade stowage items. Maximum 50kg (excepting crews)
- Operating Manuals




## Indicative Cost

Cab Chassis Costs Funding By Brigade & VESEP	\$67,500
<b>Funding Break up</b>	
Brigade Contribution	\$22,500
Grant Contribution	\$135,000
<b>Total Project Costs</b>	<b>\$157,500</b>

Indicative price is at April 2021 (excludes GST)  
 Cost escalation to point of build in 2021/22 allow up to 10% increase



	<b>BRIGADE OWNED VEHICLE BUILD-UP</b> <b>Big Fill</b> <b>(VESEP 2021/22)</b>
---	--

## 1. CAB CHASSIS (VESEP/Brigade Cost)

**Cab Chassis and associated fitments/equipment – including modifications to conform to CFA's operational safety standards**

DESCRIPTION
1.1 <b>Toyota LandCruiser 70 Series Workmate</b> Cab Chassis of 4WD (4x4) configuration and a two (2) person single cabin with 5 Star ANCAP safety rating
1.2 Cab chassis powered by a common rail direct injection turbo charged 4.5 litre V8 diesel engine with air to air intercooler. (Maximum Power: 151kW @ 3,400 RPM. Maximum Torque: 430Nm @ 1,200-3,200 RPM) compliant with ADR 80/03 (Euro 5) Emission Standards
1.3 Manufacturer's allowable G.V.M. 3,950kg ( <b>Upated by Pedders</b> )
1.4 Front Axle capacity rating 1,540kg ( <b>Upated by Pedders</b> )
1.5 Rear Axle capacity rating 2,420kg ( <b>Upated by Pedders</b> )
1.6 Wheelbase 3,180mm
1.7 Turning circle 14.4m kerb-to-kerb
1.8 Manual transmission with five (5) forward gears and one (1) reverse gear (with dual range transfer case)
1.9 Automatic locking front hubs
1.10 Ventilated disc service brakes fitted with ABS, Brake Assist, Vehicle Stability Control, Hill Start Assist Control, Electronic Brake Force Distribution and Active Traction Control
1.11 Five (5) 16" x 7" alloy rims fitted with all-terrain tyres (including spare wheel)
1.12 Fuel tank capacity 100 litres (non-standard)
1.13 Cabin interior including engine immobilizer, idle-up control, tilt and telescopic steering column, power steering, fully integrated air-conditioning, driver and passenger SRS airbags, curtain shield and driver's knee airbags, emergency locking retractor seatbelts
1.14 Front seating incorporating: <ul style="list-style-type: none"> <li>• Standard bucket style driver's seat suitable for off-road operation</li> <li>• Standard bucket style passenger seat</li> </ul>
1.15 Air cleaner snorkel fitted to the engine air intake and air cleaner fitted with flameproof air filter element (non-standard)
1.16 12V electrical system c/w 130 ampere alternator
1.17 Polished aluminium bull bar
1.18 3,500kg rated towbar, c/w towball and wiring
1.19 Bonnet protector
1.20 Two (2) headlight protectors
1.21 Intercooler bonnet guard
1.22 Steering arm protector
1.23 Engine turbo air intake heat shield
1.24 Two (2) front wheel fender flares
1.25 Two (2) rubber floor mats
1.26 Vehicle's exhaust discharges horizontally to rear of vehicle on nearside
1.27 Includes CFA Ergonomic Vehicle Design Guidelines (in its latest version) applied to equipment designs wherever practical
1.28 Compliance to Australian Design Rules (ADR's), relevant standards, regulations and Codes of Practice

## 2. **PUMP & PLUMBING** (VESEP Cost)

### Pump Set and Associated Equipment

<b>DESCRIPTION</b>	
2.1	<b>GAAM Mk500 / Isuzu 4LE2</b> water-cooled diesel engine powered single stage centrifugal water pump (Nominal flow rate: 1,900 litres/min. at 700kPa) mounted at offside rear of body
2.2	Pump priming performed by 12V electric priming pump
2.3	Pump plumbing arrangement (all plumbing manufactured from stainless steel) <ul style="list-style-type: none"> <li>• Delivery consisting of two (2) 65mm Storz ball valve-controlled outlets angled downwards at 30° above tray-level at rear</li> <li>• Suction consisting of a 100mm Storz inlet angled downwards at 15° above tray-level at rear</li> </ul>
2.4	Pump engine fitted with 12V starter motor and controls (powered from cab chassis 12V battery)
2.5	Pump controls and instrument panel mounted at rear offside of body
2.6	Pump engine fuel system including 12V pump and header tank integrated with the cab chassis diesel fuel system
2.7	Pump engine exhaust system discharges vertically at offside of body
2.8	Includes CFA Ergonomic Vehicle Design Guidelines (in its latest version) applied to equipment designs wherever practical

### 3. **BODYWORK** (VESEP Cost)

#### Bodywork Build-up Arrangement

DESCRIPTION	
3.1	Aluminium tray frame
3.2	Front and rear of the tray frame fitted with aluminium light mounting frames
3.3	Offside of the tray fitted with an access step and handrailing (for pump maintenance only)
3.4	Two (2) white painted aluminium stowage lockers (NS1 & NS2) located above tray on the <u>nearside</u> of the body
3.5	One (1) white painted aluminium stowage locker (OS1) located above tray on the <u>offside front</u> of the body
3.6	One (1) chequer plate aluminium stowage locker located below tray on the <u>offside rear</u> of the body
3.7	One (1) chequer plate aluminium stowage locker located below tray on the <u>nearside rear</u> of the body
3.8	One (1) aluminium suction hose stowage locker located below tray at <u>rear</u> of the body
3.9	Rear wheels fitted with aluminium mudguards
3.10	CFA radio c/w hand held control head and ignition relay
3.11	External rear speaker for CFA radio (mounted on front light mounting frame)
3.12	CFA portable radio charger (and CFA portable radio, if vehicle is additional to fleet)
3.13	<b>Hazard Systems CS202</b> Hand-Held Siren/Light Controller (or equivalent) with control pad mounted on cabin dash and 100W speaker mounted on bull bar
3.14	Flashing headlights (alternate flashing)
3.15	Four (4) red and blue LED hazard lights (2 at front and 2 at rear of appliance)
3.16	Two (2) red and blue LED mini light bars (mounted on front light mounting frame)
3.17	Green (" <b>Quickfill</b> ") LED beacon (mounted on front light mounting frame between red and blue LED mini light bars)
3.18	Two (2) LED scene lights (mounted on front light mounting frame)
3.19	Rear LED scene light (mounted on rear light mounting frame)
3.20	LED pump bay light (mounted on rear light mounting frame)
3.21	High level LED brake light (mounted on rear light mounting frame)
3.22	Two (2) LED combination rear tail/stop/indicator/reversing lamps (on rear bumper bar)
3.23	Two (2) LED reversing lights angled at 45° (c/w separate switch)
3.24	LED under tray step light
3.25	LED locker lights
3.26	LED flexible arm map light on cabin dash
3.27	Reversing buzzer
3.28	Reversing camera c/w in-dash display
3.29	<b>Intellitec Battery Guard</b> battery management system with Reset switch on cabin dash
3.30	CFA reflective Red/Yellow chequer striping, reflective yellow striping at rear and outline profile of body and cabin, CFA logos, " <b>FIRE</b> ", " <b>Emergency 000</b> " and " <b>Brigade Name</b> " decals and " <b>Aerial ID</b> " number
3.31	Cabin engraved nameplates and decals
3.32	Weighbridge certificate of completed appliance ( <u>Typical</u> )
3.33	Registration
3.34	Operating instructions
3.35	Stowage supplied as per Section 4
3.36	Includes CFA Ergonomic Vehicle Design Guidelines (in its latest version) applied to equipment designs wherever practical
3.37	Compliance to Australian Design Rules (ADR's), relevant standards, regulations and Codes of Practice



#### 4. STOWAGE (VESEP / **Brigade Cost**)

CFA-approved Stowage equipment is supplied as follows:

Item	Contractor and/or CFA F&PE to Supply	CFA Brigade to Supply (see Note)
<b>Nearside Front Locker NS1 (Front)</b>		
1 x Remote Area Lighting System - YELLOW – <i>Pelican Cat. No. 9430</i>	✓	
1 x 12/24V Vehicle Charger - <i>Pelican Cat. No. 9436</i>	✓	
1 x Tripod - <i>Pelican Cat. No. 9430TP</i>	✓	
1 x GREEN LED flashing light - <i>Lightman VSC14000</i> with GREEN lens	✓	
1 x Roadside GREEN flashing light - <i>E-Flare 700-EF510(G)</i> with GREEN lens	✓	
<b>Nearside Front Locker NS1 (Rear)</b>		
2 x Delivery hose - <i>Duraline</i> - 64mm x 15 metre c/w 65mm Storz couplings ( <i>CFA Part No. HDURALINE64CST15M</i> )	✓	
2 x Delivery hose - <i>Duraline</i> - 64mm x 30 metre c/w 65mm Storz couplings	✓	
2 x Delivery hose - canvas – 64mm x 30 metre c/w 65mm Storz couplings	✓	
2 x Delivery hose - canvas - 38mm x 30 metre c/w 38mm external lug couplings	✓	
<b>Nearside Rear Locker NS2</b>		
2 x <i>Quell TPB15-38mm</i> brass fog nozzles c/w 38mm external lug couplings	✓	
2 x 65mm Storz to 38mm external lug adaptor ( <i>CFA Part No. ST6538ULC</i> )	✓	
1 x Adaptor – 65mm Storz - 64mm x 5TPI female loose nut	✓	
1 x Adaptor – 65mm Storz - 64mm x 3TPI female loose nut	✓	
2 x Adaptor – 65mm Storz - 64mm x 3TPI male	✓	
1 x Adaptor – 65mm Storz – 50mm female camlock	✓	
1 x Adaptor – 65mm Storz – 75mm female camlock	✓	
1 x Adaptor – 65mm Storz – 75mm male camlock	✓	
1 x Blank cap – 65mm Storz	✓	
1 x <i>Hoening</i> basket strainer	✓	
1 x Float (polystyrene or plastic) with long chain	✓	
1 x Rope (synthetic) – 10mm x 10m long	✓	
2 x <i>“OneKey”</i> spanners ( <i>CFA Part No. SSONEKEY</i> )	✓	
2 x Storz suction/delivery washer – 100mm	✓	
4 x Storz delivery washer – 65mm	✓	
4 x Rubber washer – 64mm	✓	
6 x Rubber washer – 38mm	✓	
1 x Tool kit (c/w assorted tools)	✓	
1 x Tow strap (4,000kg minimum) – 50mm x 6m long	✓	
<b>Offside Front Locker OS1</b>		
1 x CFA First Aid Kit ( <i>CFA Part No. F2CFA</i> )	✓	
1 x Axe	✓	
1 x Drink Cooler (e.g. <i>“Esky”</i> 20-26 litre, or equivalent)	✓	
20 x Drinking water - 600ml bottle		✓
2 x Personal PPE		✓
2 x Crew protection blankets – 1.8m x 2m - Red ( <i>CFA Part No. BLANKET</i> )		✓
2 x Camp chair		✓
4 x Tent pole		✓
1 x Insect repellent		✓
2 x Ear plugs (packet of disposable plugs)		✓
4 x Goggles (spare pairs)		✓
4 x Leather gloves (spare pairs)		✓
1 x Rubberised gloves (spare pair)		✓
2 x Tarpaulin – 3m x 6m		✓

Item	Contractor and/or CFA F&PE to Supply	CFA Brigade to Supply (see Note)
4 x Tent rope		✓
4 x Tent peg		✓
<b>Rear Suction Hose Locker</b>		
3 x Suction hose - 100mm x 2.4m long CLEAR <i>Heliflex</i> c/w 100mm Storz swivel couplings	✓	
1 x Suction hose - 100mm x 2.1m long CLEAR <i>Heliflex</i> c/w 100mm Storz swivel couplings and 300mm long Suction Strainer fitted with 100 Storz coupling	✓	
<b>Tray</b>		
2 x Witches hat	✓	
1 x Fire extinguisher – 4.5kg Dry Chemical (AB)	✓	
2 x Rake hoes ( <i>CFA Part No. RAKEHOEM</i> )	✓	
<b>Undertray</b>		
2 x Wheel chock (one each side)	✓	
1 x Towbar gooseneck and tow ball	✓	
1 x Shovel – long handle (located nearside front of tray)	✓	
<b>Nearside Undertray Locker</b>		
1 x CFA-approved aluminium long barrel service hydrant / standpipe c/w 65mm Storz couplings and 1 x blank cap with chain ( <i>CFA Part No. HYDALTWLST</i> )	✓	
<b>Offside Undertray Locker</b>		
1 x Collector – 100mm Storz swivel coupling – 65mm Storz couplings (x2) c/w flap valves	✓	
1 x "Y" breach – 65mm Storz coupling – 65mm Storz couplings (x2) gated outlets	✓	
<b>In-Cabin</b>		
1 x CFA Radio Operating Manual	✓	
1 x CFA Vehicle and Pump log book	✓	
1 x Cab Chassis Operating Manual	✓	
1 x Cab Chassis Jack and Tools	✓	
1 x CFA Portable Radio (supplied by CFA after delivery – if appliance is additional to fleet, or, supplied by Brigade after delivery – if appliance is a replacement)	✓	✓
1 x Appliance Operating Manual	✓	
1 x Pump Operating Manual	✓	
2 x Crew (2 @ 100kg each)		✓
1 x Melways		✓
1 x Map book		✓
1 x Note pad and pens		✓
1 x Fuel card		✓
1 x Torch		✓

**Note:** Discretionary Brigade-supplied items (except crew, as shown) – 50kg maximum allowance

**Additional stowage items are not approved**

Prepared By:  
CFA Fleet & Protective Equipment  
Issue 15  
14 April 2021

Signed by CFA Fire Brigade

\_\_\_\_\_  
(Brigade Representative)

Date: / /

Approval by District Headquarters

\_\_\_\_\_  
(Assistant Chief Fire Officer)

Date: / /

### Overview

The Rehabilitation Unit supports the health and wellbeing of members at prolonged incidents or where members are working in hot or strenuous conditions. The body and cab chassis conforms with CFA operational safety standards. This vehicle can be driven on a standard drivers license.

### Cab Chassis – Isuzu NNR 45-150

- 4x2, 4.5 Tonne GVM
- Seating for a crew of 4
- Tow bar fitted
- Vehicle can be driven on a standard drivers license

### Body Construction

- Aluminium lock tube clad with white aluminium sheeting
- 2 x side roller shutters
- 1 x rear lift up door
- 1 x manually operated pneumatic light mast with 4 LED lights
- Scene lighting
- Reverse camera
- Emergency response controls
- 100L non potable water tank
- CFA standard striping and decaling
- Stowage for brigade supplied equipment including portable generators, tables, chairs, tent, esky etc, estimated 650kg
  - Front through locker Volume 3.1m<sup>3</sup> Nominal
  - Rear locker Volume 2.2m<sup>3</sup> Nominal
- Brigade Funded option available:
  - 3m manually operated awning (each side), Thule Omnistor 4900 or an equivalent.
  - Ventilated fuel locker, mounted under frame



### Indicative Costs

#### Funding Break up

Brigade Contribution	\$40,000
Grant Contribution	\$80,000

#### Total Project Costs

<b>Total Project Costs</b>	<b>\$120,000</b>
<i>Option Awning (per side) – Additional</i> Brigade Contribution	\$1,500
<i>Option Fuel Locker – Additional</i> Brigade Contribution	\$800

Indicative prices as at April 2021 (excludes GST)  
 Cost escalation to point of build in 2021/22 up to 10% increase



### Overview

The appliance is a multi-purpose vehicle licensed to carry five (5) crew, including the driver. The rear of the appliance can be configured to suit Brigade's specific requirements. Appliance to be stowed with equipment to secure and clean up after an incident. It is offered in three (3) versions:

- Version 1 – 4 x 4 short body (manual)
- Version 2 – 4 x 2 short body (manual)
- Version 3 – 4 x 2 long body (auto)

### Cab Chassis

- Version 1 - Isuzu NPS 75-155 (or equivalent) 4x4 Crew Cab Chassis with 7.5T GVM
- Version 2 - Isuzu NPR 65-190 (or equivalent) 4x2 Crew Cab Chassis with 6.5T GVM (wheelbase shortened to 3,395mm)
- Version 3 - Hino 921(or equivalent) 4x2 Crew Auto cab chassis with 8.5T GVM (wheelbase shortened to 3,870mm)

### Body

- Prefabricated aluminum framed body (SES specification)
- Stowage compartments can be configured to suit user requirements (see GA drawings)
- White painted cab and body
- Rear lift-up door with gas struts
- Roller access doors each side

### Items included:

- Cab and body painted white
- CFA livery (decals & striping)
- Seating for 5 crew (including 3 x lap/sash seat belts in rear)
- Stowage console between driver and front passenger seats
- Nearside awning
- Minor brackets and straps for Brigade stowage items
- Installation of CFA supplied radio and portable radio charger
- Registration (brigade owned vehicle)

Version 1



Version 2



Version 3





### Options available at additional cost:

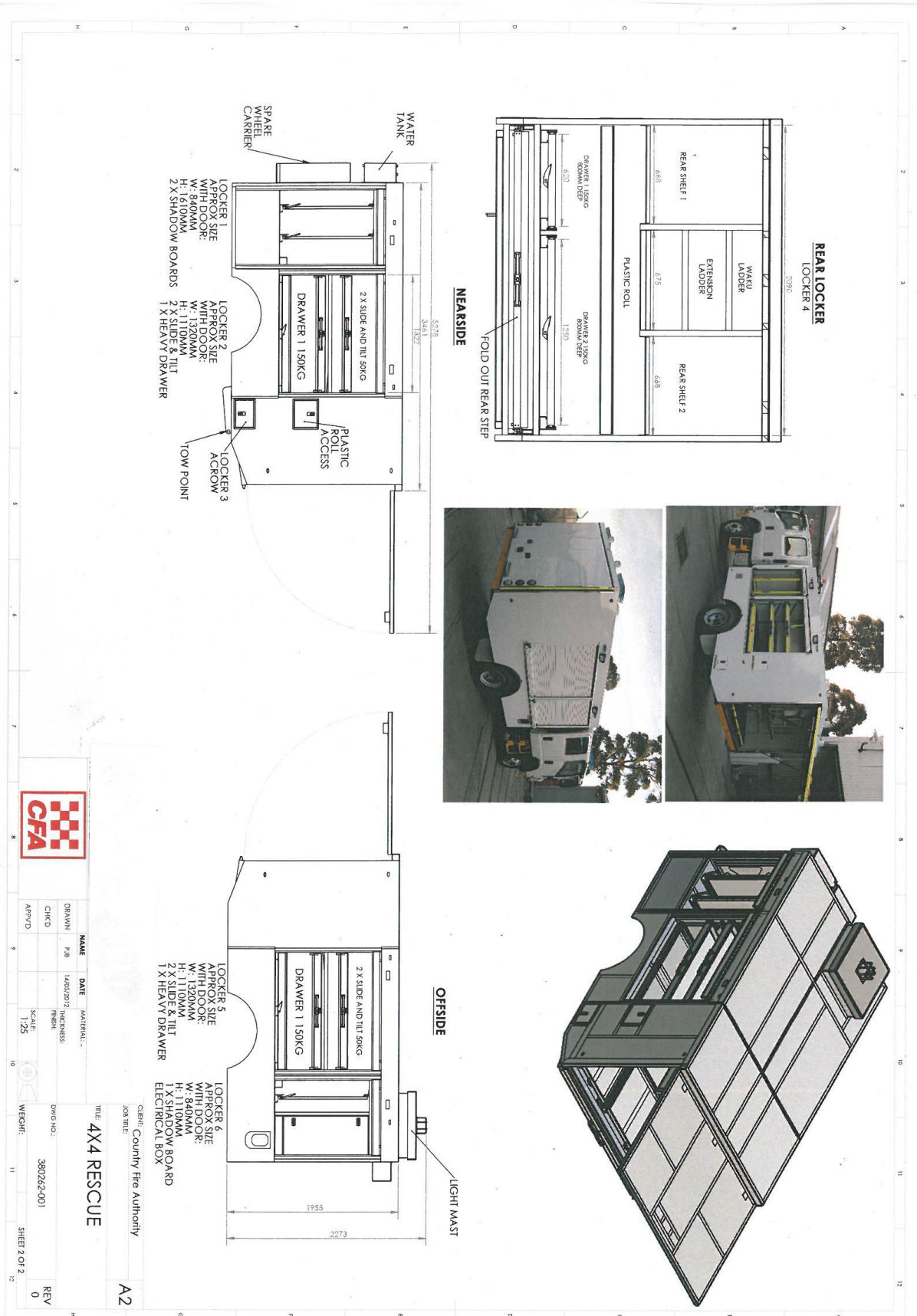
- Red painted cab and body
- Aluminum bullbar
- Inbuilt hydraulic powered 8kVA 240V generator system
- Inbuilt engine powered alternator with 8kVA 240V inverter system
- 240V reticulated power system
- Wheel arch lockers (x 2)
- Inbuilt 240V compressed air system (240V generator or 240V inverter system is required)
- Pneumatic light mast – 4m height, external mounting, 3 x standard LED lights, hand pump
- Pneumatic light mast – 4m height, external mounting, 3 x standard LED lights, electric pump
- Pneumatic light mast – 6m height, internal mounting, 4 x high powered LED lights, electric pump
- Pneumatic light mast – 6m height, internal mounting, 4 x high powered LED lights, robotic head, electric pump
- Version 2 - Upgrade to 7.5 tonne GVM (Isuzu NPR 75-190 4 x 2 Crew)
- Version 2 – Automated Manual Transmission (AMT)
- Version 1 – Automated Manual Transmission (AMT) - TBC

Indicative Costs as at April 2021 (excludes GST)

Cost escalation to point of build in 2021/22 up to 10% increase

Funding Break up	Version 1 4 x 4 Short Body Manual	Version 2 4 x 2 Short body Manual	Version 3 4 x 2 Long Body Auto
Brigade Contribution	\$ 77,500	\$ 75,000	\$74,167
VESEP Contribution	\$150,000	\$150,000	\$148,333
<b>Total Project Costs (excluding options)</b>	<b>\$227,500</b>	<b>\$225,000</b>	<b>\$222,500</b>

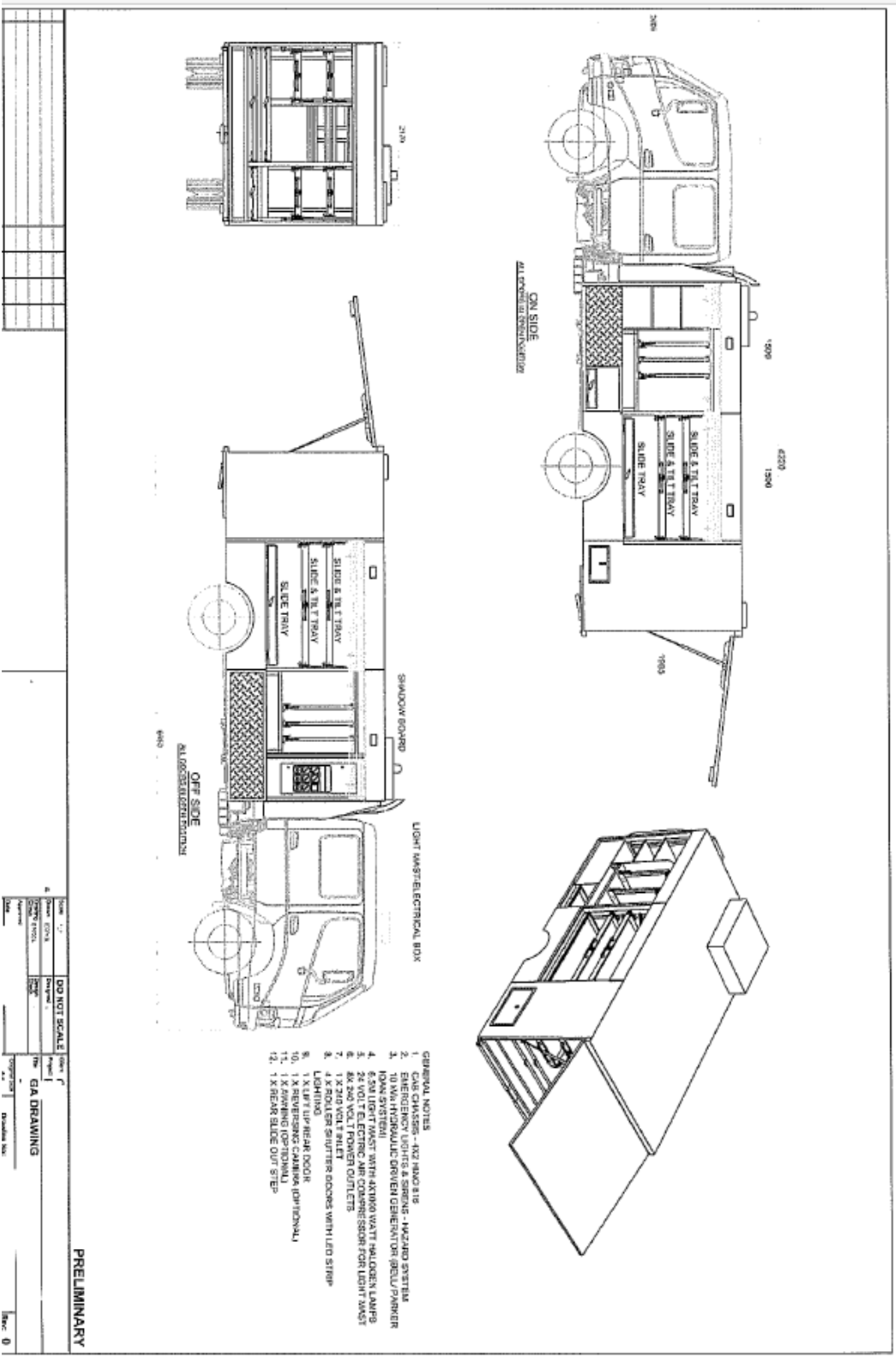
### General Assembly Drawing – 4x4 short body (Version 1) and 4x2 short body (Version 2)



These specifications are indicative and are subject to change during tendering and manufacturing



### General Assembly Drawing – 4x2 long body (version 3)



These specifications are indicative and are subject to change during tendering and manufacturing



### Background

CFA Steering Committee has indicated that one of the priorities for this funding round is to assist Brigades / Groups with grants for minor works and equipment that enhance the CFA member's wellbeing and amenities. The total value of these projects shall be less than \$5K in total (\$3,333 VESEP & \$1,667 Brigade contribution) and should be of a non-structural nature, not requiring a building permit.

### Items

Some suggestions for Volunteer amenities available under the program are listed below but are not limited to:-

- Kitchen refurbishments/Fridge
- Stove/Oven
- Tables/ Chairs
- Air Conditioning
- Hot water Service
- Furniture
- Crockery/Cutlery

### Grant Formula

\$2 VESEP to \$1 Brigade – to a maximum VESEP contribution of \$3,333

### Background

The 2021-22 program continues with the Minor works category to a maximum project value of \$100K.

### Outline

These projects are of a larger scale and will require full scoping and planning. Brigades and Groups interested must submit application details to ensure proposal is fully scoped with the VESEP Land & Buildings Department and should be discussed with their local Catchment Officer, Asset Project Officer and Assistant Chief Fire Officer.

The total project value is to be less than \$100K.  
(\$66,667 VESEP and \$33,333 Brigade contribution )

Projects with a total project cost greater than \$100K will not be considered.

### VESEP Minor Works Registration

Georgia Fine – Executive Manager Land & Building Services

Email: [g.fine@cfa.vic.gov.au](mailto:g.fine@cfa.vic.gov.au)

### Grant Formula

\$2 VESEP to \$1 Brigade – to a maximum VESEP contribution of \$66,667